



## Younger Dryas deglaciation of Scotland driven by warming summers

Title	Younger Dryas deglaciation of Scotland driven by warming summers
Author(s)	Bromley, Gordon R. M.;Putnam, Aaron E.;Rademaker, Kurt M.;Lowell, Thomas V.;Schaefer, Joerg M.;Hall, Brenda L.;Winckler, Gisela;Birkel, Sean D.;Borns, Harold W.
Publication Date	2014-04-14
Publisher	National Academy of Sciences
Repository DOI	<a href="https://doi.org/10.1073/pnas.1321122111">10.1073/pnas.1321122111</a>

# Younger Dryas Deglaciation Of Scotland Driven By Warming Summers

Gordon R.M. Bromley<sup>1,\*</sup>, Aaron E. Putnam<sup>1,2</sup>, Kurt M. Rademaker<sup>1</sup>, Thomas V. Lowell<sup>3</sup>, Joerg M. Schaefer<sup>2</sup>, Brenda L. Hall<sup>1</sup>, Gisela Winckler<sup>2</sup>, Sean D. Birkel<sup>1</sup>, Harold W. Borns, Jr<sup>1</sup>.

<sup>1</sup> Climate Change Institute and School of Earth & Climate Sciences, University of Maine, Orono, Maine 04469, USA <sup>2</sup> Lamont-Doherty Earth Observatory, 61 Route 9W, Palisades, New York 10960, USA <sup>3</sup> Department of Geology, University of Cincinnati, Cincinnati, OH 45221-0013, USA

Submitted to Proceedings of the National Academy of Sciences of the United States of America

**The Younger Dryas stadial (YDS; ~12,900-11,600 yr ago) in the Northern Hemisphere is classically defined by abrupt cooling and renewed glaciation during the last glacial-interglacial transition. While this event involved a global reorganization of atmospheric and oceanic circulation (Denton GH, Alley RB, Comer GC, Broecker WS (2005) The role of seasonality in abrupt climate change. *Quat. Sci. Rev.* 24: 1159-1182), the magnitude, seasonality, and geographical footprint of YDS cooling remain unresolved and pose a challenge to our understanding of abrupt climate change. Here, we present a deglacial chronology from Scotland, immediately downwind of the North Atlantic Ocean, indicating that the Scottish ice cap disintegrated during the first half of the YDS. We suggest that stratification of the North Atlantic Ocean resulted in amplified seasonality that, paradoxically, stimulated a severe wintertime climate ice while promoting warming summers through solar heating of the mixed layer. This latter process drove deglaciation of downwind landmasses to completion well before the end of the YDS.**

Younger Dryas | Scotland | Deglaciation | Seasonality

## Introduction

Determining the causes of abrupt climate change remains an outstanding question of paleoclimatology, the answer to which involves resolving the timing, magnitude, and geographic extent of past abrupt climate events. The YDS is widely considered the canonical example of abrupt climate change. Mean-annual temperatures in the circum-North Atlantic returned to near-full glacial values for ~1300 years, before rising 5-10°C within a few years to decades (2, 3). This dramatic cooling has been correlated with renewed glaciation throughout the Northern Hemisphere, particularly in the circum-North Atlantic. In Europe, for instance, the YDS has been assumed to be synonymous with the most extensive glacier advances of the late glacial (4-8). The extreme temperatures of the stadial have been attributed to stratification of the North Atlantic water column and shutdown of MOC (9), in addition to the spread of wintertime sea ice and shifting westerly airflow (10). However, while the North Atlantic remains a key player in hypotheses for the YDS, recent developments are refining our view of the event's full manifestation. Mean-annual temperatures recorded in the Greenland ice cores were skewed towards strong wintertime cooling, due to the effect of expanded North Atlantic winter sea ice (1). Conversely, summer atmospheric temperatures, which dominate glacier mass balance, probably were milder than previously thought (1, 11-13). Thus, the North Atlantic may have exhibited the hallmarks of a "continental climate" during the YDS, which, if true, has important implications regarding the role of highly seasonal North Atlantic stadial events in facilitating, rather than stalling, recession of adjacent ice masses. We address this problem by presenting a chronology of glacial activity immediately downwind of the North Atlantic in Scotland.

Glaciers are sensitive to small changes in climate, particularly temperature and precipitation. In Western Europe, where climate is dominated by the ameliorating effect of the North

Atlantic Current, glaciers are highly responsive to upwind sea-surface temperatures (Text S1) and past glacier behavior would have been dominated by North Atlantic sea-surface conditions. Thus, the Scottish glacial record is ideal for reconstructing late-glacial variability in North Atlantic temperature (Fig. 1). The last glacier resurgence in Scotland – the "Loch Lomond Advance" (LLA) – culminated in a ~9500 km<sup>2</sup> ice cap centered over Rannoch Moor (Fig. 2A) and surrounded by smaller ice fields and cirque glaciers. The ice cap was drained via calving tidewater glaciers along its western margin and land-terminating glaciers along its eastern margin. Well-preserved moraines indicate that subsequent deglaciation was characterized by progressive, active retreat rather than rapid downwasting (14, 15). In contrast to the wealth of information constraining the physical characteristics of the LLA, few data exist resolving the precise age of the event and there remains considerable uncertainty as to when the advance began or when glaciers reached their maximum extent (16-18). Nevertheless, the LLA traditionally is correlated with the YDS and assumed to have culminated near the end of the stadial (5).

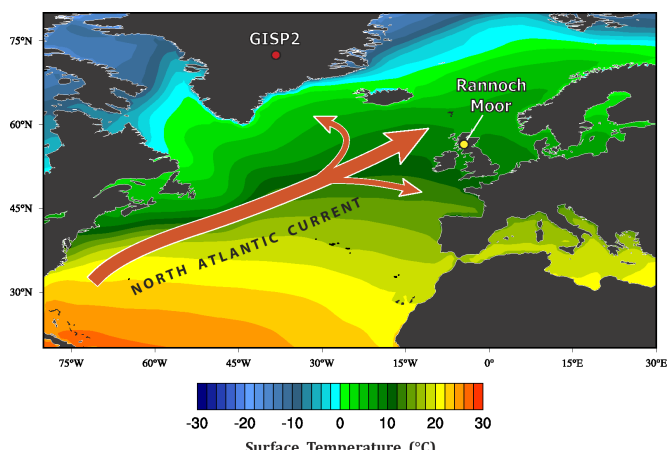
To derive an independent chronology of glacier recession downwind of the North Atlantic, we mapped and dated glacial deposits in the western sector of Rannoch Moor (56.636°N, 4.7732°W), located at the former centre of the LLA ice cap, to reconstruct the final stages of ice-cap retreat. End moraines of up to 5 m relief define the northward recession of an active ice front across the moor (~300 m elevation), whereas chaotic mounds located on broad uplands (~400 m elevation) near the moor's center indicate final stagnation of remnant ice (Fig. 2B). Previous investigations into the deglacial chronology of the site

## Significance

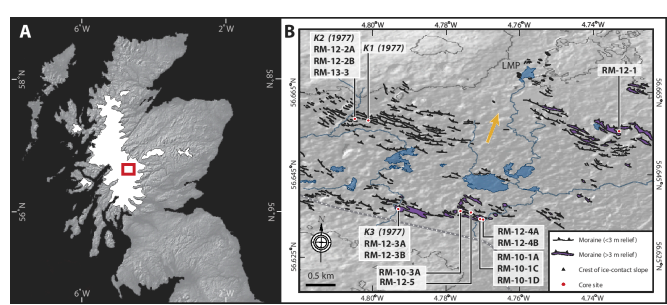
**Resolving the full manifestation of past abrupt climate change is key to understanding the processes driving and propagating these events. As a principal component of global heat transport, the North Atlantic Ocean also is susceptible to rapid disruptions of meridional overturning circulation and, thus, widely invoked as a cause of abrupt climate variability in the Northern Hemisphere. We assess the impact of one such North Atlantic cold event – the Younger Dryas Stadial – on an adjacent ice mass and show that, rather than instigating a return to glacial conditions, this abrupt climate event was characterized by deglaciation. We suggest this pattern indicates summertime warming during the Younger Dryas, potentially as a function of enhanced seasonality in the North Atlantic.**

## Reserved for Publication Footnotes

137  
138  
139  
140  
141  
142  
143  
144  
145  
146  
147  
148  
149  
150  
151  
152  
153  
154  
155  
156  
157  
158  
159  
160  
161  
162  
163  
164  
165  
166  
167  
168  
169  
170  
171  
172  
173  
174  
175  
176  
177  
178  
179  
180  
181  
182  
183  
184  
185  
186  
187  
188  
189  
190  
191  
192  
193  
194  
195  
196  
197  
198  
199  
200  
201  
202  
203  
204



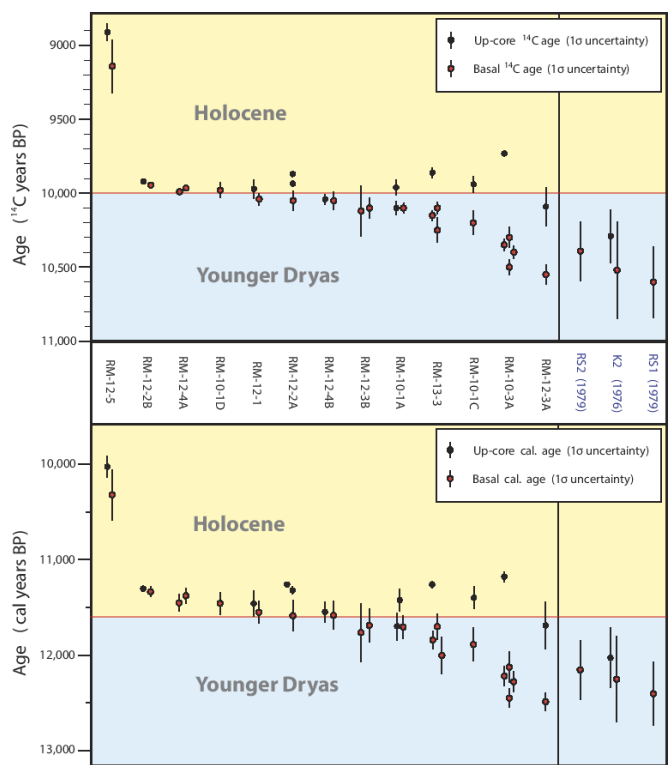
**Fig. 1.** Surface temperature and heat transport in the North Atlantic Ocean. The relatively mild European climate is sustained by warm sea-surface temperatures and prevailing south-westerly airflow in the North Atlantic Ocean (NAO), with this ameliorating effect being strongest in maritime regions such as Scotland. Mean annual temperature(1979-present) at 2 m above surface (image obtained using UMaine Climate Reanalyzer – <http://www.cci-reanalyzer.org>). Locations of Rannoch Moor and the GISP2 ice core are indicated.



**Fig. 2.** Extent of the LLA ice cap in Scotland and glacial geomorphology of western Rannoch Moor. (A) Maximum extent of the ~9500 km<sup>2</sup> LLA ice cap and larger satellite ice masses, indicating the central location of Rannoch Moor. Nunataks are not shown. (B) Glacial-geomorphic map of western Rannoch Moor. Distinct moraine ridges mark the northward active retreat of the glacier margin (indicated by arrow) across this sector of the moor, whereas chaotic moraines near Lochan Meall a' Phuill (LMP) mark final stagnation of ice. Core sites are shown, including those (K1-K3) of previous investigations (21, 22).

invoked ice-free conditions at Rannoch Moor – and consequently throughout Scotland – as early as 12,400 ± 330 cal yr (sample SRR-1074 [Ref. 19], Table S1.) and no later than 12,150 ± 300 cal yr (sample BIRM-858 [Ref. 19], Table S1.). This scenario conflicts with the canonical view that glaciers in Scotland collapsed in response to rapid warming at the end of the YDS (as reviewed in Ref. 18), suggesting instead that deglaciation was underway early in the stadial.

To address this discrepancy, we collected thirteen sediment cores from moraine-dammed bogs at Rannoch Moor (Fig. 2B, Fig. S1-S3) and extracted organic material for <sup>14</sup>C dating from sediments immediately overlying the LLA till. Our independent radiocarbon-based chronology is underpinned by 20 basal ages derived from these water-lain post-glacial sediments. Samples consisted primarily of terrestrial plant macrofossils (see Materials and Methods, Fig. S4) that most likely were dislodged from adjacent land surfaces (e.g., by slope processes, wind, rain, etc.) and incorporated into nearby drainage, before being deposited along with reworked minerogenic sediments in topographic basins. Thus, terrestrial plant remains in these earliest post-glacial de-



**Fig. 3.** Relative distribution of Rannoch Moor radiocarbon dates. Ages are shown for all thirteen cores (this study), as well as the relative distributions of previously published ages (19, 21, 22). Basal <sup>14</sup>C ages are highlighted in red. <sup>14</sup>C ages from higher stratigraphic levels are shown in black.

**Table 1.**

Scenario	Age ( <sup>14</sup> C yr)	Mean calibrated age (cal yr)	Earliest probable age at 90% confidence (cal yr)
Single oldest age:	10,550 ± 65	12,481 ± 95	12,580
OS-99685	65		
Oldest replicable ages (N=4): OS-99978, OS-89842, OS-89841, OS-99977	25	10,394 ± 25	12,493
All basal ages (N=20)	-	-	12,371

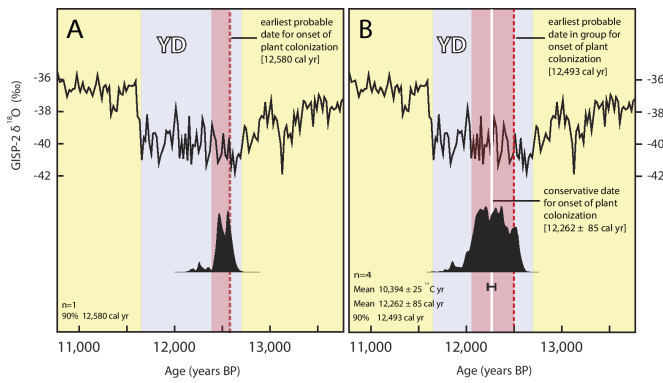
posits typically do not reflect growth position. There is no evidence (e.g., till, disturbance of sediments) in our cores for ice overriding subsequent to deposition of the LLA till. Moreover, the near-perfect preservation of the plant remains (Fig. S4) argues against these macrofossils having been glacially reworked from the pre-LLA landscape. Thus, the earliest organics in our cores represent the onset of postglacial plant colonization of Rannoch Moor and provide a minimum limit on the age of complete deglaciation of the LLA ice cap.

**Results and Discussion**

Radiocarbon ages are shown in Figure 3 and are given in Table S1. Ages from the lowermost macrofossils in each core range from 9140 ± 180 to 10,550 ± 65 <sup>14</sup>C yr, corresponding to 10,320 ± 270 to 12,480 ± 100 cal yr (Table S1). This non-normal distribution is characteristic of minimum-limiting datasets and confirms that the basal ages do not represent a single event (deglaciation) but

205  
206  
207  
208  
209  
210  
211  
212  
213  
214  
215  
216  
217  
218  
219  
220  
221  
222  
223  
224  
225  
226  
227  
228  
229  
230  
231  
232  
233  
234  
235  
236  
237  
238  
239  
240  
241  
242  
243  
244  
245  
246  
247  
248  
249  
250  
251  
252  
253  
254  
255  
256  
257  
258  
259  
260  
261  
262  
263  
264  
265  
266  
267  
268  
269  
270  
271  
272

273  
274  
275  
276  
277  
278  
279  
280  
281  
282  
283  
284  
285  
286  
287  
288  
289  
290  
291  
292  
293  
294  
295  
296  
297  
298  
299  
300  
301  
302  
303  
304  
305  
306  
307  
308  
309  
310  
311  
312  
313  
314  
315  
316  
317  
318  
319  
320  
321  
322  
323  
324  
325  
326  
327  
328  
329  
330  
331  
332  
333  
334  
335  
336  
337  
338  
339  
340



**Fig. 4.** Minimum-limiting ages for the final collapse of the LLA ice cap compared to the Greenland temperature record. (A) Sum-probability curve for the single oldest basal age, shown in black, with 90% confidence interval (pink shading) and maximum probable age for plant colonization (red dashed line). This age suggests Rannoch Moor was ice free by 12,580 cal yr. (B) Sum-probability curve for the oldest replicable basal ages, showing both the oldest probable age for plant colonization and the error-weighted mean (white line) with  $2\sigma$  uncertainty (black bar). This calibrated mean age represents our 'conservative' estimate for the final collapse of the LLA ice cap and indicates that Rannoch Moor was deglaciated no later than  $\sim 12,200$  cal yr. For comparison, the GISP2  $\delta^{18}\text{O}$  record (43) and YDS (blue shading) are shown.

a process: the progressive post-glacial colonization by plants of Rannoch Moor. Initial sparse vegetation is succeeded over time by more extensive and continuous cover, a non-uniform process which may have been complicated by the presence of buried ice (Text S2). Thus, the distribution of basal dates will be skewed towards younger ages, whereas those more closely representing the onset of plant colonization will be relatively few (Text S2 & S3). For this reason, because we want to examine the very first occurrence of plant growth on Rannoch Moor – and thereby provide a close minimum-limiting age for deglaciation – we focus on the oldest basal dates.

When did post-glacial plant colonization of Rannoch Moor begin? Here, we employ several statistical approaches to establish the basal radiocarbon age(s) most representative of that event. First, following geologic convention [e.g., Ref. 20], we take the single oldest age in our dataset as the closest constraint on deglaciation. Sample OS-99685 ( $10,550 \pm 65$   $^{14}\text{C}$  yr; Table S1), from the basal section of core RM-12-3A, gives a weighted-mean calibrated age of  $12,480 \pm 100$  cal yr, whereas the earliest *probable* (defined here as the 90% confidence interval) age of that sample is 12,580 cal yr (Table 1, Figs. 4A & S5). However, this widely used approach raises the possibility of basing paleoclimatic interpretations on a potentially 'old' outlier sample. A second and more conservative method is to use the oldest *replicable* dates as a minimum age for deglaciation. Using  $\chi^2$  statistics, we identified the oldest replicable basal  $^{14}\text{C}$  ages in our dataset as samples OS-99977, OS-99978, OS-89841, and OS-89842, all from the basal 4 cm of core RM-10-3A (Text S3, Fig. S1, Table S1). This statistically indistinguishable grouping [ $\chi^2 = (3, n=4) = 7.6, p=7.8$ ] has an error-weighted mean calibrated age of  $12,262 \pm 85$  cal yr, which we take as a conservative date for the onset of plant colonization (Figs. 4B, S6). However, at 90% confidence, the earliest probable age for the first plants on Rannoch Moor based on these ages is 12,493 cal yr (Fig. S6).

A third and broader-scale approach assesses the cumulative probability of all eighteen basal ages. Since the non-normal distribution of this dataset precludes taking the mean as a close minimum age for plant colonization (Text S3), we use the 90% confidence interval to identify the earliest probable age represented by this dataset as 12,371 cal yr (Table 1, Fig. S7). Fur-

thermore, although 40% of the cumulative-probability curve lies  $< 11.6$  Ka, this distribution reflects the inclusion of basal ages that are considerably younger than the onset of plant growth. Thus, we argue that, for this analysis of all basal data, the 90% value constrains most closely the age of deglaciation.

While there are several ways to establish the most representative age for deglaciation using a minimum-limiting dataset such as ours, we note that, regardless of approach, the outcome does not change our conclusions. As shown in Table 1, the difference between the earliest probable age (12,580 cal yr) and our most conservative estimate ( $12,262 \pm 85$  cal yr) is  $< 400$  years, reflecting the consistency among our oldest basal ages. Furthermore, because these ages represent the first vegetation to colonize Rannoch Moor following deglaciation, they constitute a minimum-limiting age for final disappearance of the LLA ice cap. Our chronology indicates that deglaciation of Rannoch Moor was complete as early as  $\sim 12,580$  cal yr, but no later than  $\sim 12,200$  cal yr (Fig. 4). This interpretation is reinforced by the tight agreement between our data and existing minimum-limiting ages from Rannoch Moor (19, 21, 22) (Fig. 3, Table S1).

Both "earliest" and "conservative" scenarios indicate that Rannoch Moor was deglaciated by mid-YDS time (Fig. 4) and, therefore, that the extensive  $\sim 9500$  km<sup>2</sup> LLA ice cap was gone from the landscape at least 500 years prior to the end of the stadial. These findings conflict with the prevailing view that glaciers in Scotland advanced and maintained maximum positions throughout much of the YDS, posing the question: What drove deglaciation during a period of apparently severe North Atlantic cold? Furthermore, if the YDS was characterized by deglaciation, then when did the LLA itself occur?

We consider two possible resolutions to the paradox of deglaciation during the YDS. First, declining precipitation over Scotland due to gradually increasing North Atlantic sea-ice extent has been invoked to explain the reported shrinkage of glaciers in the latter half of the YDS (16). However, this course of events conflicts with recent data depicting rapid, widespread imposition of winter sea-ice cover at the onset of the YDS (10), rather than progressive expansion throughout the stadial. Furthermore, considering the gradual active retreat of LLA glaciers indicated by the geomorphic record, our chronology suggests that deglaciation began considerably earlier than the mid YDS, when precipitation reportedly began to decline (16). Finally, our cores contain lacustrine sediments deposited throughout the latter part of the YDS, indicating that the water table was not substantially different from that of today. Indeed, some reconstructions suggest enhanced YDS precipitation in Scotland (23, 24), which is inconsistent with the explanation that precipitation starvation drove deglaciation (25).

We prefer an alternative scenario in which glacier recession was driven by summertime warming and snowline rise. We suggest that amplified seasonality, driven by greatly expanded winter sea ice, resulted in a relatively continental YDS climate for Western Europe, both in winter and in summer. While sea-ice formation prevented ocean-atmosphere heat transfer during the winter months (1), summertime melting of sea ice would have imposed an extensive freshwater cap on the ocean surface (26), resulting in a buoyancy-stratified North Atlantic. In the absence of deep vertical mixing, summertime heating would be concentrated at the ocean surface, thereby increasing both North Atlantic summer SSTs and downwind air temperatures. Such a scenario is analogous to modern conditions in the Sea of Okhotsk (27) and the North Pacific Ocean (28), where buoyancy stratification maintains considerable seasonal contrasts in SSTs. Indeed, Haug et al. (28) reported higher summer SSTs in the North Pacific following the onset of stratification than previously under destratified conditions, despite the growing presence of northern ice sheets and an overall reduction in annual SST. A similar pattern is evident

341  
342  
343  
344  
345  
346  
347  
348  
349  
350  
351  
352  
353  
354  
355  
356  
357  
358  
359  
360  
361  
362  
363  
364  
365  
366  
367  
368  
369  
370  
371  
372  
373  
374  
375  
376  
377  
378  
379  
380  
381  
382  
383  
384  
385  
386  
387  
388  
389  
390  
391  
392  
393  
394  
395  
396  
397  
398  
399  
400  
401  
402  
403  
404  
405  
406  
407  
408

in a new SST record from the northeastern North Atlantic, which shows higher summer temperatures during stadial periods (e.g., Heinrich stadials 1 and 2) than during interstadials on account of amplified seasonality (29).

The effects of stratification-driven summertime warming may have been exacerbated by amplified seasonal shifts of the boreal westerlies. Although the jet stream likely was stronger and more zonal across the North Atlantic during YDS winters on account of expanded sea-ice (10), retreat of the sea-ice edge during spring and summer to a position north of Norway (30) could have facilitated a more meridional trajectory of the summertime jet, resulting in incursions of warmer subtropical air masses to Scotland. Additionally, YDS warming of the mid-latitude North Atlantic that arose as a consequence of curtailed MOC (31) would have enhanced warming of subtropical air masses, potentially stimulating summertime melting of downwind European glaciers. Concurrently, increasing solar radiation due to maximum summer insolation, combined with rising atmospheric CO<sub>2</sub> concentrations (32), could have dominated seasonal warming and glacier recession during the YDS.

Regarding the timing of the LLA, our chronology provides a firm minimum constraint for the event and shows deglaciation of Rannoch Moor – and thus Scotland – was complete by at least ~12,200 yr ago. While this scenario is supported by earlier radiocarbon studies (19, 21, 22, 33), it is difficult to reconcile with the paradigm of the LLA being driven by YDS cooling, since that would require the accumulation and collapse of a major ice cap within as little as 400 years. Indeed, one recent assessment places the onset of the YDS closer to 12.7 Ka (10), further shortening the window of time available for a stadial-driven advance. Such rapid build-up and decay of the ice cap is inconsistent, however, with the abundance of geomorphic data indicating deglaciation was dominated by gradual active retreat rather than sudden stagnation (14, 15), and with recent modeled reconstructions of the ice cap's evolution forced by Greenland temperature data (18). Thus, in the context of our chronology, we suggest the LLA represents either (i) a relatively minor expansion during the earliest YDS of a pre-existing ice mass or (ii) a glacial advance predating the YDS chronozone. The latter scenario is consistent with an earlier interpretation of the Scottish record suggesting an Allerød age for the LLA (33), and with the pre-YDS advance of outlet glaciers in western Norway towards their maximum late-glacial positions (34).

1. Denton GH, Alley RB, Comer GC, Broecker WS (2005) The role of seasonality in abrupt climate change. *Quat Sci Rev* 24: 1159–1182.
2. Severinghaus J, Sowers T, Brook EJ, Alley RB, Bender ML (1998) Timing of abrupt climate change at the end of the Younger Dryas interval from thermally fractionated gases in polar ice. *Nature* 391: 141–146.
3. Steffensen JP, et al. (2008) High resolution Greenland ice core data show abrupt climate change happens in few years. *Science* 321: 680–684.
4. Mangerud J, Larsen E, Longva O, Sønstegeard E (1979) Glacial history of Western Norway, 15,000–10,000 BP. *Boreas* 8: 179–187.
5. Ballantyne CK (2012) Chronology of glaciation and deglaciation during the Loch Lomond (Younger Dryas) Stade in the Scottish Highlands: implications of recalibrated 10Be exposure ages. *Boreas* 41: 513–526.
6. Larsen E, Eide F, Longva O, Mangerud J. (1984) Allerød-Younger Dryas climate inferences from cirque glaciers and vegetation development in the Nordfjord area, western Norway. *Arctic & Alpine Res.* 16: 137–160.
7. Andersen BG, et al. (1995) Younger Dryas ice-marginal deposits in Norway. *Quat. Internat.* 28: 147–169.
8. Ivy-Ochs S, Schlüchter C, Kubik PW, Denton GH (1999) Moraine Exposure Dates Imply Synchronous Younger Dryas Glacier Advances in the European Alps and in the Southern Alps of New Zealand. *Geografiska Annaler* 81(A): 313–323.
9. McManus JF, Francois R, Gherardi J-M, Keigwin LD, Brown-Ledger S (2004) Collapse and rapid resumption of Atlantic meridional circulation linked to deglacial climate changes. *Nature* 428: 834–837.
10. Brauer A, Haug GH, Dulski P, Sigman DM, Negendank JFW (2008) An abrupt wind shift in western Europe at the onset of the Younger Dryas cold period. *Nature Geo.* 1: 520–523.
11. Björck S, et al. (2002) Anomalously mild Younger Dryas summer conditions in southern Greenland. *Geology* 30: 427–430.

Our interpretation of the Rannoch Moor data, involving the summer (winter) heating (cooling) effects of a shallow North Atlantic mixed layer, reconciles full stadial conditions in the North Atlantic with YDS deglaciation in Scotland. This scenario might also account for the absence of YDS-age moraines at several higher-latitude locations (12, 35–37) and for evidence of mild summer temperatures in southern Greenland (11). Crucially, our chronology challenges the traditional view of renewed glaciation in the Northern Hemisphere during the YDS, particularly in the circum-North Atlantic, and highlights our as-yet incomplete understanding of abrupt climate change.

## Materials and Methods:

### Macrofossils used for <sup>14</sup>C measurements.

Radiocarbon analyses were performed primarily on plant material collected from basal sediments overlying glacial till with a 5 cm-diameter Livingston corer. Basal sediments comprise finely laminated units of fine- and medium-grained sand and clay (Figs. 51–53), occasionally separated by thin lenses of gyttja, and exhibit abrupt transitions into overlying organic-rich material. Overall concentrations of organics in the minerogenic material are low, reflecting the sparsely vegetated nature of recently deglaciated terrain, and increase with distance up core. Macrofossils used in our analyses were dominated by terrestrial plant species such as *Rhacomitrium* sp., *Empetrum* sp., *Betula* sp., *Sphagnum* sp., *Pogonatum* sp., and *Vaccinium* sp. (Fig. 54; Table S1). Additionally, species indicative of shallow aquatic environments include *Potamogeton* sp., *Chara* sp., and *Nitella* sp. One sample (OS-93723) consisted entirely of chitinous black beetle shell fragments. Sediments first were wet-sieved to remove the fine-grained fraction, then inspected under a microscope. Macrofossils were extracted using tweezers and subsequently cleaned in de-ionized water in an ultrasonic bath to remove any fine-grained minerogenic residue that potentially could be a source of old carbon (38, 39). We note that contamination by dissolved old carbon (the hard-water effect) is unlikely to affect our samples due to the absence of carbonate lithologies in the surrounding area and our preferential selection of terrestrial species for radiocarbon analyses. Analyses were performed at the Keck-Carbon Cycle AMS Laboratory, UC Irvine, and at NOSAMS, Woods Hole Oceanographic Institute. Radiocarbon dates were calibrated to calendar years using OxCal v.4.2 (40, 41) and IntCal 09 (42).

### Acknowledgements:

We are grateful to G.H. Denton, U. Ninnemann, J. Southon, S. Barker, D. Peteet, M.R. Kaplan, A. Dieffenbacher-Krall, A. Nurse, J. McManus, and J. Adkins for contributing many helpful insights. We thank I. Bromley, D. Duerden, E. Watson, and H. Senn for assisting in field work. We are particularly grateful to D.Q. Bowen and J. Severinghaus for providing detailed and constructive reviews. This research is supported by grants from the Dan & Betty Churchill Exploration Fund and the Lamont-Doherty Earth Observatory Climate Center. G.R.M.B. was supported by a Lamont-Doherty Earth Observatory postdoctoral fellowship. A.E.P. was supported by the Gary Comer Science and Education Foundation, the National Oceanographic and Atmospheric Administration, and a Lamont-Doherty Earth Observatory postdoctoral fellowship. This is LDEO contribution no. XXXX.

12. Hall B, Baroni C, Denton G, Kelly M, Lowell T (2008) Relative sea-level change, Kjøve Land, Scoresby Sund, East Greenland: implications for seasonality in Younger Dryas time. *Quat. Sci. Rev.* 27: 2283–2291.
13. Ampel L, et al. (2010) Modest summer temperature variability during DO cycles in western Europe. *Quat. Sci. Rev.* 29: 1322–1327.
14. Bennett MR, Glasser NF (1991) The glacial landforms of Glen Geussachan, Cairngorms: A reinterpretation. *Scottish Geog. Mag.* 107: 116–123.
15. Bennett MR, Boulton GS (1993) Deglaciation of the younger dryas or Loch Lomond Stadial ice-field in the northern Highlands, Scotland. *Jour. Quat. Sci.* 8: 133–145.
16. Benn DI, Lowe JJ, Walker MJC (1992) Glacier response to climatic change during the Loch Lomond Stadial and early Flandrian: geomorphological and palynological evidence from the Isle of Skye, Scotland. *Jour. Quat. Sci.* 7: 125–144.
17. MacLeod A, et al. (2011) Timing of glacier response to Younger Dryas climatic cooling in Scotland. *Global and Planetary Change* 79: 264–274.
18. Golledge NR, Hubbard A, Sugden DE (2008) High-resolution numerical simulation of Younger Dryas glaciation in Scotland. *Quat. Sci. Rev.* 27: 888–904.
19. Walker MJC, Lowe JJ (1979) Postglacial environmental history of Rannoch Moor, Scotland II. Pollen diagrams and radiocarbon dates from the Rannoch Station and Corrouar areas. *Jour. Biogeog.* 6: 349–362.
20. Strelin JA, Denton GH, Vandergoes MJ, Ninnemann US, Putnam AE (2011) Radiocarbon chronology of the late-glacial Puerto Bandera moraines, Southern Patagonian Icefield, Argentina. *Quat. Sci. Rev.* 30: 2551–2569.
21. Lowe JJ, Walker MJC (1976) Radiocarbon-dates and deglaciation of Rannoch Moor, Scotland. *Nature* 264: 632–633.
22. Walker MJC, Lowe JJ (1977) Postglacial environmental history of Rannoch Moor, Scotland. I. Three pollen diagrams from the Kingshouse area. *Jour. Biogeog.* 4: 333–351.
23. Ballantyne CK (2002) The Loch Lomond Readvance on the Isle of Mull, Scotland: glacier

545  
546  
547  
548  
549  
550  
551  
552  
553  
554  
555  
556  
557  
558  
559  
560  
561  
562  
563  
564  
565  
566  
567  
568  
569  
570  
571  
572  
573  
574  
575  
576  
577  
578  
579  
580  
581  
582  
583  
584  
585  
586  
587  
588  
589  
590  
591  
592  
593  
594  
595  
596  
597  
598  
599  
600  
601  
602  
603  
604  
605  
606  
607  
608  
609  
610  
611  
612

reconstruction and palaeoclimatic implications. *Jour. Quat. Sci.* 17: 759–771.

24. Benn DI, Lukas S (2006) Younger Dryas glacial landsystems in western Scotland: possible modern analogues and palaeoclimatic implications. *Quat. Sci. Rev.* 25: 2390–2408.

25. Bowen DQ, (1992) The Pleistocene of North West Europe, *Science Progress Oxford*, 76, 209–223.

26. Bard E, Rostek F, Turon J-L, Gendreau S (2000) Hydrological impact of Heinrich events in the subtropical northeast Atlantic. *Science* 289: 1321–1324.

27. Hays JD, Morley JJ (2004) The Sea of Okhotsk: A Window on the Ice Age Ocean. *Deep-Sea Res. I* 51: 593–618.

28. Haug GH, et al. (2005) North Pacific seasonality and the glaciation of North America 2.7 million years ago. *Nature* 433: 821–825.

29. Caille C, et al. (2013) Sea-surface hydrographical conditions off South Faeroes and within the North-Eastern North Atlantic through MIS 2: the response of dinocysts. *Jour. Quat. Sci.* 28: 217–228.

30. Cabedo-Sanz P, Belt ST, Knies J, Husum K (2012) Identification of contrasting seasonal sea ice conditions during the Younger Dryas. *Quat. Sci. Rev.* 79: 74–86.

31. Naafs BDA, Hefter J, Grützner J, Stein R (2013) Warming of surface waters in the mid-latitude North Atlantic during Heinrich events. *Paleoceanography* 28: 153–163.

32. Monnin E, et al. (2001) Atmospheric CO<sub>2</sub> Concentrations over the Last Glacial Termination. *Science* 291: 112–114.

33. Bowen, DQ (1999) Only four major 100-ka glaciations during the Brunhes Chron? *Intl. Jour. of Earth Sci.* 88: 276–284.

34. Lohne OS, Bondevik S, Mangerud J, Svendsen JI (2007) Sea-level fluctuations imply that the Younger Dryas ice-sheet expansion in western Norway commenced during the Allerød. *Quat. Sci. Rev.* 26: 2128–2151.

35. Mangerud J, Landvik JY (2007) Younger Dryas cirque glaciers in western Spitsbergen: smaller than during the Little Ice Age. *Boreas* 36: 278–285.

36. Kelly MA, et al. (2008) A 10Be chronology of late-glacial and Holocene mountain glaciation in the Scoresby Sund region, east Greenland: implications for seasonality during late-glacial time. *Quat. Sci. Rev.* 27: 2273–2282.

37. Briner JP, Davis PT, Miller GH (2009) Latest Pleistocene and Holocene glaciation of Baffin Island, Arctic Canada: key patterns and chronologies. *Quat. Sci. Rev.* 28: 2075–2087.

38. Lowe JJ, Walker MJC (1980) in *Studies in the Lateglacial of North-West Europe* Lowe JJ, Gray JM, Robinson JE (Pergamon, Oxford), pp 123–138.

39. Sutherland DG (1980) in *Studies in the Lateglacial of North-West Europe*, eds Lowe JJ, Gray JM, Robinson JE (Pergamon, Oxford), pp 139–150.

40. Bronk Ramsey C (2009) Bayesian analysis of radiocarbon dates. *Radiocarbon* 51: 337–360.

41. Ward GK, Wilson SR (1978) Procedures for Comparing and Combining Radiocarbon Age-

Determinations - Critique. *Archaeometry* 20: 19–31.

42. Reimer PJ, et al. (2009) IntCal09 and Marine09 radiocarbon age calibration curves, 0–50,000 years cal B.P. *Radiocarbon* 51(4): 1111–1150.

43. Grootes PM, Stuiver M (1997) Oxygen 18/16 variability in Greenland snow and ice with 103 to 105-year time resolution. *Jour. Geophys. Res.* 102: 26455–26470.

**Figure & table captions:**

**Fig. 1** Surface temperature and heat transport in the North Atlantic Ocean. The relatively mild European climate is sustained by warm sea-surface temperatures and prevailing south-westerly airflow in the North Atlantic Ocean (NAO), with this ameliorating effect being strongest in maritime regions such as Scotland. Mean annual temperature (1979-present) at 2 m above surface (image obtained using UMaine Climate Reanalyzer – <http://www.cci-reanalyzer.org>). Locations of Rannoch Moor and the GISP2 ice core are indicated.

**Fig. 2** Extent of the LLA ice cap in Scotland and glacial geomorphology of western Rannoch Moor. (A) Maximum extent of the ~9500 km<sup>2</sup> LLA ice cap and larger satellite ice masses, indicating the central location of Rannoch Moor. Nunataks are not shown. (B) Glacial-geomorphic map of western Rannoch Moor. Distinct moraine ridges mark the northward active retreat of the glacier margin (indicated by arrow) across this sector of the moor, whereas chaotic moraines near Lochan Meall a' Phuill (LMP) mark final stagnation of ice. Core sites are shown, including those (K1–K3) of previous investigations (21, 22).

**Fig. 3** Relative distribution of Rannoch Moor radiocarbon dates. Ages are shown for all thirteen cores (this study), as well as the relative distributions of previously published ages (19, 21, 22). Basal <sup>14</sup>C ages are highlighted in red. <sup>14</sup>C ages from higher stratigraphic levels are shown in black.

**Fig. 4** Minimum-limiting ages for the final collapse of the LLA ice cap compared to the Greenland temperature record. (A) Sum-probability curve for the single oldest basal age, shown in black, with 90% confidence interval (pink shading) and maximum probable age for plant colonization (red dashed line). This age suggests Rannoch Moor was ice free by 12,580 cal yr. (B) Sum-probability curve for the oldest replicable basal ages, showing both the oldest probable age for plant colonization and the error-weighted mean (white line) with 2σ uncertainty (black bar). This calibrated mean age represents our 'conservative' estimate for the final collapse of the LLA ice cap and indicates that Rannoch Moor was deglaciated no later than ~12,200 cal yr. For comparison, the GISP2 δ<sup>18</sup>O record (43) and YDS (blue shading) are shown.

**Table 1.** Radiocarbon and calibrated age determinations for the minimum deglaciation-age scenarios.

==EndOfDocument==

613  
614  
615  
616  
617  
618  
619  
620  
621  
622  
623  
624  
625  
626  
627  
628  
629  
630  
631  
632  
633  
634  
635  
636  
637  
638  
639  
640  
641  
642  
643  
644  
645  
646  
647  
648  
649  
650  
651  
652  
653  
654  
655  
656  
657  
658  
659  
660  
661  
662  
663  
664  
665  
666  
667  
668  
669  
670  
671  
672  
673  
674  
675  
676  
677  
678  
679  
680