



A cDNA microarray assessment of gene expression in the liver of rainbow trout (*Oncorhynchus mykiss*) in response to a handling and confinement stressor

Title	A cDNA microarray assessment of gene expression in the liver of rainbow trout (<i>Oncorhynchus mykiss</i>) in response to a handling and confinement stressor
Author(s)	Cairns, Michael T.;Johnson, M. C.;Talbot, A. T.;Pernmasani, J. K.;McNeill, R. E.;Houeix, Benoit;Sangrador-Vegas, A.;Pottinger, T. G.
Publication Date	2008-03
Publisher	Elsevier
Repository DOI	10.1016/j.cbd.2007.04.009

1
2
3
4
5
6
7
8
9
10
11
12
13
14
15
16
17
18
19
20

**A cDNA microarray assessment of gene expression in
the liver of rainbow trout (*Oncorhynchus mykiss*) in
response to a handling and confinement stressor.**

M. T. Cairns^{1*}, M. C. Johnson¹, A. T. Talbot¹, J. K. Pemmasani¹, R. E.
McNeill¹, B. Houeix¹,
A. Sangrador-Vegas¹, and T. G. Pottinger.²

¹ *National Diagnostics Centre, National University of Ireland, Galway, Ireland*

² *Centre for Ecology and Hydrology, Lancaster Environment Centre, Library Avenue,
Bailrigg, Lancaster LA1 4AP, United Kingdom*

* Corresponding author. Tel.: +353 91492094; Fax: +353 91586570;

E-mail address: michael.cairns@nuigalway.ie

21 **Abstract**

22 A purpose-designed microarray platform (Stressgenes, Phase 1) was utilised to
23 investigate the changes in gene expression within the liver of rainbow trout during
24 exposure to a prolonged period of confinement. Tissue and blood samples were collected
25 from trout at intervals up to 648 h after transfer to a standardised confinement stressor,
26 together with matched samples from undisturbed control fish. Plasma ACTH, cortisol,
27 glucose and lactate were analysed to confirm that the neuroendocrine response to
28 confinement was consistent with previous findings and to provide a phenotypic context to
29 assist interpretation of gene expression data. Liver samples for suppression subtractive
30 hybridization (SSH) library construction were selected from within the experimental
31 groups comprising "early" stress (2-48h) and "late" stress (96-504h). In order to reduce
32 redundancy within the four SSH libraries and yield a higher number of unique clones an
33 additional subtraction was carried out. After printing of the arrays a series of 55
34 hybridisations were executed to cover 6 time-points. At 2h, 6h, 24h, 168h and 504h 5
35 individual confined fish and 5 individual control fish were used with control fish only at
36 0h. A preliminary list of 314 clones considered differentially regulated over the complete
37 time course was generated by a combination of data analysis approaches and the most
38 significant gene expression changes were found to occur during the 24h to 168h time
39 period with a general approach to control levels by 504h. Few changes in expression were
40 apparent over the first 6h. The list of genes whose expression was significantly
41 altered comprised predominantly genes belonging to the biological process category
42 (response to stimulus) and one cellular component category (extracellular region) and
43 were dominated by so-called acute phase proteins. Analysis of the gene expression profile

44 in liver tissue during confinement revealed a number of significant clusters. The major
45 patterns comprised genes that were up-regulated at 24 h and beyond, the primary
46 examples being haptoglobin, β -fibrinogen and EST10729. Two representative genes from
47 each of the six k-means clusters were validated by qPCR. Correlations between
48 microarray and qPCR expression patterns were significant for most of the genes tested.
49 qPCR analysis revealed that haptoglobin expression was up-regulated approximately 8-
50 fold at 24 h and over 13-fold by 168 h.

51

52

53

54 *Keywords:* rainbow trout, *Oncorhynchus mykiss*, stress, microarray, gene expression

55

56 **1. Introduction**

57 The vertebrate stress response is a highly conserved suite of neuroendocrine,
58 physiological and behavioural adjustments that, when evoked, enhance the individuals
59 likelihood of survival when exposed to destabilising and challenging circumstances
60 (Johnson et al., 1992). The stress response in fish has been the subject of much interest,
61 not only in an evolutionary and comparative context, but also because of the perceived
62 impact of stress on the welfare and productivity of aquacultured fish (Pottinger and
63 Pickering, 1997). Aquacultured fish species are essentially non-domesticated (Price,
64 1999; Vandeputte and Launey, 2004), few generations removed from the wild type, and
65 therefore respond inappropriately to relatively benign events that occur unavoidably
66 within the aquaculture environment, such as routine husbandry procedures, transport and
67 related activities. They may also be adversely affected by holding conditions that impose
68 levels of inter-individual interaction or other behavioural conditions that are at odds with
69 the normal life-history requirements of the species (Huntingford, 2004). Where activation
70 of the stress response is intermittent or prolonged the adverse outcomes for growth,
71 reproductive function and immunocompetence are well-documented (Bonga, 1997).

72

73 Selective breeding of aquacultured fish to improve economically important traits such as
74 fecundity and growth rate is an established practice (Gjoen and Bentsen, 1997; Hulata,
75 2001). There is now increasing effort being directed at evaluating the feasibility of
76 selective breeding for a reduced stress response, as a means to improve performance
77 across a range of traits (Pottinger, 2000; Pottinger and Carrick, 1999; Wang et al., 2004).
78 In order for this approach to become practicable, we require a greater understanding of

79 the genetic basis of the stress response than is currently available - relying solely on
80 phenotypic performance markers is imprecise – and we require genetic markers of
81 desirable stress-related traits.

82

83 The aim of the present study was to utilise a purpose-designed microarray platform to
84 investigate the changes in gene expression that occur within a single tissue, the liver, in
85 rainbow trout during prolonged exposure to stressful conditions. A well-established non-
86 invasive model stressor, prolonged confinement (Pottinger and Pickering, 1992), was
87 used to elicit a neuroendocrine stress response in adult rainbow trout and a range of
88 phenotypic endpoints was measured to provide a contextual basis for the interpretation of
89 the microarray data. Analysis of gene expression in the liver tissue of the stressed fish
90 was addressed by: (1) constructing a series of cDNA libraries enriched for genes
91 differentially regulated during stress; (2) applying cDNA microarray technology to
92 investigate the global response of the liver to the stressor, and (3) seeking to identify
93 genes and processes that might ultimately provide markers of stress responsiveness.

94

95 **2. Materials and Methods**

96 *2.1 Experimental animals*

97 Ten days prior to the start of the study 360 adult rainbow trout (CEH 2000, unselected,
98 mixed-sex; mean weight \pm SEM: 236 \pm 4.3 g) were distributed evenly between 20
99 holding tanks (18 fish/tank). Each tank (circular, glassfibre, 1000 l) was supplied with a
100 constant flow of lake water (25 l/min) at ambient temperature. Prior to the start of the
101 time-course study the fish were fed commercial food (Skretting Standard Expanded 40) at

102 the manufacturers recommended rate. During the study food was withheld from both the
103 control and confined fish because of the potentially confounding effects of stress-induced
104 appetite suppression.

105

106 *2.2 Protocol for confinement stress*

107 Twelve fish from each of ten of the holding tanks were transferred by dip net to pairs of
108 confinement tanks (6 fish/tank, 50 l capacity, 15 l/min flow through) at intervals. The
109 transfers were carried out at appropriate intervals to allow the sampling and processing of
110 fish at 0, 1, 2, 4, 6, 24, 48, 96, 168, 336, 504 and 648 h after the onset of confinement. In
111 addition, at each of these time-points 6 fish each from two of the ten remaining
112 undisturbed holding tanks were sampled, providing 12 stressed and 12 control fish, from
113 duplicate holding tanks/confinement tanks, at each time point. This protocol necessitated
114 the repeated sampling of control tanks, however the interval between successive episodes
115 of disturbance was considered to be of sufficient duration, and the degree of disturbance
116 so minor, as not to impinge on the results of the study.

117

118 *2.3 Sample collection and tissue processing*

119 At each sample point, 6 fish were netted rapidly from the holding/confinement tank and
120 transferred to an anaesthetic/sedative solution (2-phenoxyethanol; 1:2000; Sigma-
121 Aldrich). Blood samples were collected from the caudal vessels into syringes, then the
122 fish were weighed, measured and killed by spinal section. Each syringe contained EDTA
123 (1.5 mg/ml blood; Sigma-Aldrich) as anticoagulant and the antiprotease aprotinin (3000
124 KU/ml blood; Sigma-Aldrich). Tissues (liver, skin, head kidney, brain, pituitary) were

125 dissected rapidly and transferred either to labelled cryotubes, or wrapped in foil, before
126 being snap frozen in liquid N₂ and stored at -80°C. Blood samples were held on ice before
127 being centrifuged at 4°C. Plasma was aspirated and stored frozen (-20°C) in 100 µl
128 aliquots for subsequent analysis.

129

130 *2.4 Hormone and metabolite analysis and statistical evaluation*

131 Analyses of conventional indicators of the neuroendocrine stress response were carried
132 out in order to support the interpretation of array data, and to confirm that the
133 physiological status of the fish was as intended. Plasma corticotropin (ACTH) and
134 cortisol levels were determined by RIA (Balm and Pottinger, 1993; Pottinger and Carrick,
135 2001) and plasma glucose and lactate levels were determined spectrophotometrically
136 (Sigma Diagnostics procedures nos. 510 and 735). The hormone and metabolite data
137 were subjected to analysis of variance (ANOVA, GENSTAT) with time and treatment
138 (stressed, control) as factors and fish within tanks as blocking structure. Significant
139 differences were determined using the estimated SE of the differences between means
140 derived from the ANOVA. Where mean and variance were found to be interdependent,
141 the data were log-transformed prior to analysis.

142

143 *2.5 RNA isolation*

144 Liver samples for SSH library construction were selected from within the experimental
145 groups on the basis of blood cortisol levels. Only unstressed fish with cortisol levels < 15
146 ng/ml were used for the control group, while fish with cortisol levels > 25 ng/ml were

147 selected from among the stressed fish. Only female fish were selected for RNA isolation
148 to avoid expression anomalies that might be due to sex differences.

149

150 Total RNA was isolated using the RNeasy Maxi Kit (Qiagen). Routinely 0.3-0.5g liver
151 tissue yielded 1-2.5mg total RNA. An on-column DNase treatment step was incorporated
152 to yield samples predominantly free of contaminating DNA. The integrity of the RNA
153 was checked by separating 5 μ g of RNA on formaldehyde denaturing gels. Only samples
154 that showed no degradation after probing with an α^{32} P-labelled β -actin control cDNA, as
155 indicated by a sharp band with no ‘tailing’ were used for microarray analysis.
156 Subsequently all samples were re-analysed on the Agilent Bioanalyser: RNA Integrity
157 Numbers (RIN) averaged 9.72 ± 0.38 . RNA was quantified by UV spectrometry at
158 260nm (Shimadzu UV-1601). Following evaluation of blood cortisol levels it was
159 decided to divide both stress and control samples into “early” (2-48h) and “late” (96-
160 504h) groups. Each group was represented by 9-13 fish. Poly A⁺ RNA was isolated from
161 pooled RNA samples with affinity columns using the Oligotex mRNA Kit (Qiagen). The
162 average yield of mRNA from 1mg of liver total RNA was 2%. Integrity and enrichment
163 of the poly A⁺ RNA was checked again using a β -actin probe.

164

165 For microarray screening, 5 samples of stressed and 5 samples of control fish were
166 obtained for each of the time points 0 h (control only), 2h, 6h, 24h, 168h and 504h.
167 Although only females were employed, there was no selection on the basis of cortisol
168 levels. The quality of all these samples was verified by probing northern blots with β -

169 actin. Because an insufficient number of high quality RNA preparations were available
170 the 48h and 96h time points were excluded.

171

172 *2.6 SSH library construction*

173 Four suppression subtractive hybridization (SSH) libraries were constructed using the
174 PCR-Select cDNA Subtraction Kit (BD Biosciences). These corresponded to ‘early’ and
175 ‘late’ fish groupings (see previous section) and both the forward and reverse subtractions:
176 each subtraction was a stress group with its corresponding control group. SSH was
177 performed following the manufacturer’s protocol on 2 µg poly A⁺ RNA. An aliquot of
178 the secondary PCR product (2 µl) was cloned into pCR2.1 vector using the TA Cloning
179 Kit from Invitrogen, and transformed into chemically competent TOP10 *E. coli*
180 (Invitrogen). The efficiency observed was $1 \cdot 10^5$ colonies/µg of DNA (5,000 colonies per
181 transformation). Twenty-five white colonies were selected from each library and
182 subjected to PCR. Insert sizes varied from 200 bp to 1,300 bp with 97% of clones having
183 inserts. In order to reduce redundancy within the four SSH libraries and yield a higher
184 number of unique clones an additional subtraction was carried out. The procedure was
185 based on labelling the products of one library (or libraries) with biotin, hybridising these
186 with a second library (or libraries), and cloning the unhybridised DNA after magnetic
187 separation with streptavidin-tagged magnetic beads (Carninci et al., 2000). Three
188 subtractions (libraries RTGL5-7) were carried out on the four liver SSH libraries
189 (RTGL1-4).

190

191 *2.7 Sequence analysis*

192 At the same time that samples were being prepared for PCR, duplicate plates of glycerol
193 stocks were sequenced (The Sanger Centre, Hinxton, Cambs.). Sequences were edited to
194 remove vector and adaptor sequences, and cleaned and filtered before clustering and
195 annotation by the SIGENAE information system (INRA Toulouse, France). Cleaning
196 involved masking of poor quality bases and low complexity sequences such as polyA
197 sequences. Filtering removed contaminating sequences (bacteria, yeast) and allowed only
198 sequences with more than 100 bases of high quality sequence to pass. Contigs were
199 annotated by comparison to the SwissProt database using the Blastx program
200 (<http://www.ncbi.nlm.nih.gov/BLAST/>). In addition, because of the 3' bias to SSH
201 libraries, sequences were also analysed and compared to a variety of nucleic acid
202 databases using the EST-Ferret program (Li, W., University of Liverpool;
203 <http://legr.liv.ac.uk/>)

204

205 *2.8 Micoarray hybridisations*

206 PCR (96-well) was carried out in detergent-less conditions in 30 mM Tricine, pH 8.0
207 containing 50 mM KCl, 2 mM MgCl₂, 0.2 mM dNTPs and 0.2µM of each nested primer
208 (same primers as used in the final stage of the SSH library construction). The reaction
209 volume was 75 µl and 2.5 units of Biotaq (Bioline, UK) were used per reaction.
210 Templates were the glycerol stocks of the SSH clones. Quality of PCR products was
211 assessed on ethidium bromide-stained agarose gels: single products of approximately
212 equal concentration were required. Printing of the arrays was carried out at the University
213 of Liverpool without further purification of PCR products.

214

215 A reference design approach was taken for the microarray hybridisations: all
216 experimental samples (10 µg) were labelled with one of the two dyes and compared to a
217 reference sample (10 µg) labelled with the second dye that consisted of a pool of all the
218 RNA samples used in the experiment. Denatured RNA (10 µg) was reversed transcribed
219 with 75 units Stratascript reverse transcriptase (Stratagene, UK) in a total volume of 20 µl
220 containing RT buffer, 10 mM DTT and 1.25 mM amino-allyl dUTP/dNTP (1:1) mix. The
221 reaction was primed with both an anchored oligo dT primer and a random primer (V9) at
222 0.25 µg/µl and incubated at 42°C for 1 h before making a second addition of 50 units
223 Stratascript reverse transcriptase. After a further 1 h at 42°C the reaction was stopped
224 with 0.45M EDTA in 1M NaOH and neutralised with 0.75M HEPES, pH 7.4 containing
225 0.75M sodium acetate. The cDNA was purified on a Nucleospin column (Macherey-
226 Nagel), dried on a vacuum concentrator and resuspended with 5 µl 0.1M NaHCO₃, pH
227 9.0. cDNAs (experimental and reference) were labelled with Cy5 and Cy3 dyes
228 (Amersham GE, UK) using the indirect labelling procedure as directed by the supplier.
229 After combining Cy5 and Cy3 labelled cDNAs and removal of unincorporated dyes on a
230 Nucleospin column (Macherey-Nagel), samples were resuspended to 100µl with
231 ArrayHyb Low Temp Hybridisation Buffer (Sigma, UK) at 65°C.

232

233 Slides printed at the University of Liverpool were denatured by immersion in boiling
234 18MΩ water for 1 min. Denatured, labelled target cDNA was applied to the microarray
235 slides, covered with a lifter slip (Erie Scientific) and the slides were incubated in a
236 hybridisation chamber (Genetix) at 50°C for 16 h. After hybridisation all slides were
237 washed manually in 1x SSC, 0.1% SDS, 1mM DTT (2 x 5 min), 0.1xSSC, 0.1% SDS,

238 1mM DTT (2 x 5 min), rinsed briefly in 18MΩ water (all solutions pre-warmed to 55°C)
239 and immersed briefly in room temperature isopropanol. Slides were centrifuged to
240 dryness and scanned immediately on a ScanArray Express HT scanner (Perkin Elmer).
241 Genepix software (GRI Ltd, UK) was employed to facilitate data acquisition from the
242 images. Any spots in poor areas of the slides (smears, dust specks, poor spot morphology)
243 were manually flagged as 'bad'.

244

245 A series of 55 hybridisations were planned to cover six time-points. At 2 h, 6 h, 24 h, 168
246 h and 504 h: five individual confined fish and five individual control fish (biological
247 replicates) were used. Only control fish were required for the 0 h time point. Although the
248 hybridisations utilised several batches of slides, these were distributed across conditions
249 and time points to minimise the possibility of bias arising.

250

251 *2.9 Microarray analysis*

252 Stage 1 of the analysis in GeneSpring involved an overview of all samples in order to
253 highlight or remove spurious samples. Viewing of the Cy5/Cy3 ratios in GeneSpring
254 allowed a subjective appreciation of poor slides that could be dismissed from the
255 analysis. Principal Component Analysis (PCA) was also used to examine variation across
256 the samples with time and with animal: again this indicated slides to exclude from the
257 analysis. Normalisation (after dye swapping) used the Lowess normalisation method even
258 though this approach should not strictly be used on clones when the majority are expected
259 to be differentially regulated. Stage 2 of the analysis involved cleaning up the data by
260 filtering out genes that showed large variability in their Cy5/Cy3 ratios and/or by filtering

261 out genes with near baseline raw signal intensities. Stage 3 involved the identification of
262 potential differentially regulated genes by use of one-way ANOVA.

263

264 *2.10 Quantitative RT-PCR analysis*

265 Total RNA samples with RNA Integrity Numbers (RIN) averaging 9.72 ± 0.38 were used
266 for qRT-PCR. cDNA was synthesized from 5 μg of total RNA and 500 ng of polydT
267 primer in a reaction volume of 40 μl using SuperScriptTM III reverse transcriptase
268 (Invitrogen) following the supplier's protocol. Primers were designed for qRT-PCR for
269 all selected 12 candidate genes plus two housekeeping genes using Vector NTI
270 AdvanceTM software (Invitrogen). Size of the amplicons to be produced ranged between
271 100-150 base pairs. qPCR reactions were set up as follows: 10 μl of QuantiTect SYBR
272 Green PCR Kit (Qiagen), 0.5 μM final concentration of primers, 5 μl of cDNA template
273 at a dilution of 1:12.5 and to a final volume of 20 μl with RNase-free water. The
274 Mx3000P[®] QPCR system (Stratagene) was used for performing the qPCR reaction. The
275 program used for qPCR was 95°C for 15 min, 40 cycles of 95°C for 15 s, annealing at 51
276 – 60°C (depending on primers) for 30 s and extension at 72°C for 30 s. Dissociation
277 curves were examined at the end of the PCR reaction to check for unspecific
278 amplification and primer-dimers.

279

280 Relative changes in the expression of candidate genes were calculated using the method
281 described by Pfaffl (2001). To assess the PCR efficiency of each gene, standard curves
282 were created by serial dilution of standard cDNA preparations.

283

284 **3. Results**

285

286 *3.1 Hormone and metabolite levels during confinement*

287 The changes in plasma ACTH, cortisol, glucose and lactate levels in control and confined
288 fish over the duration of the study are shown in Fig. 1 (a – d).

289

[Insert Figure 1]

290 *3.1.1 ACTH*

291 Overall, ANOVA revealed plasma ACTH levels to be higher in confined than control fish
292 ($P<0.001$; Fig. 1a). This difference was most pronounced between 24 h and 96 h after the
293 onset of confinement. Plasma ACTH levels in confined fish increased significantly
294 between time 0 and 1 h ($P<0.01$) although a high level of variation among ACTH values
295 in control fish means that no significant difference between control and confined fish was
296 detected at 1 h. There was no significant difference between control values at 0 h and 1 h.
297 The peak in plasma ACTH that was observed at 48 h after the onset of confinement in
298 stressed fish coincides with disturbances in both glucose and lactate in the confined group
299 and suggests that these fish experienced a stressful event that was imposed upon the
300 ongoing confinement. Inspection of the data reveals that the increase was accounted for
301 primarily by the fish within one of the two confinement tanks sampled at this time. It may
302 be the case that agonistic social interaction within this tank was particularly pronounced.

303

304 *3.1.2 Cortisol*

305 ANOVA revealed highly significant effects of both time ($P<0.001$) and treatment
306 ($P<0.001$) on plasma cortisol levels with confined fish displaying overall higher plasma

307 cortisol levels than unconfined individuals (Fig. 1b). Plasma cortisol levels rose rapidly
308 following the onset of confinement to reach a level that was consistently sustained until
309 declining between 96 and 336h. Between 336h ad 648h plasma cortisol levels in control
310 and confined fish were statistically indistinguishable. It is noteworthy that little direct
311 correlation between plasma cortisol and plasma ACTH levels was evident, either for
312 treatment groups or individual fish (data not shown). In addition, although not evident
313 from Fig. 1, there was a marked difference in plasma cortisol levels between fish from the
314 two confinement tanks sampled at 48 h, consistent with similar observations for the other
315 determinands. For most of the study period, mean plasma cortisol levels in the control
316 groups remained below 10 ng/ml. However, between 2h and 6h mean levels rose from 5.7
317 to 38.7 ng/ml before declining again to 6.5 ng/ml by 48h. This is coincident with some
318 minor disturbance of ACTH levels in the control fish and may reflect an unattributable
319 disturbance to the fish in the tanks sampled on these occasions. These tanks had not been
320 sampled previously.

321

322 *3.1.3 Glucose*

323 Plasma glucose levels changed significantly with both time and treatment ($P < 0.001$: Fig.
324 1c). There was no evidence of an early elevation in plasma glucose levels following
325 transfer to the confinement tanks but levels began to rise after 6 h to reach a peak at 48 h,
326 before declining to baseline levels between 168 and 336 h. An increase in plasma glucose
327 levels at 48 h in the confined fish was coincident with peaks in plasma ACTH and lactate
328 levels, probably for the reasons noted above. There was a steady and significant

329 (P<0.001) decline in plasma glucose levels in the control fish during the course of the
330 study, presumably related to the absence of food.

331

332 *3.1.4 Lactate*

333 Significant variation was evident in lactate levels in both control and confined groups
334 (Fig. 1d). The ANOVA reported significant treatment (P<0.001) and time (P<0.001)
335 effects which appeared to have two major components. A significant elevation in plasma
336 lactate levels was evident in confined fish within 1 h of the start of the study (P<0.001).
337 In addition, there was a gradual but significant (P<0.01) increase in lactate levels in
338 control fish between 4 h and 48 h such that lactate levels in confined fish were
339 significantly lower than those in controls for the latter phase of the confinement period.
340 Furthermore, there was a two-fold increase in lactate levels in confined fish at 48 h
341 (P<0.001), at the same time as increases in plasma ACTH and glucose were observed.

342

343 *3.2 Sequence analysis*

344 The array consisted of 21120 spots most of which were unknown sequences at the time of
345 microarray printing. Of these, 1011 were liver clones isolated from the four confinement
346 stress SSH libraries and 621 were liver clones isolated after the redundancy subtraction
347 from these same four libraries (section 2.6). The complete array will be described
348 elsewhere but an overview of its composition is presented in figure 2. In addition to the
349 1632 liver clones from confinement stress there were also 1536 pituitary clones and 1152
350 brain clones from fish exposed to a confinement stressor. Liver clones from fish exposed
351 to a temperature stressor (3072), hypoxia stressor (1536) and pathogen exposure (960)

352 were also represented. There were additional clones from the brain tissue of fish exposed
353 to temperature (3072) and hypoxia stressors (1536), muscle clones from temperature
354 (3072) and hypoxia stressor-exposed fish (1536), and gill (980), head kidney (960) and
355 mixed tissue (460) clones from pathogen exposed fish. Only a subset of the liver clones
356 (769 clones of the 1632 clones relating to confinement stress) was sequenced generating
357 507 quality sequences made up of 247 different contigs, 49 of which were singletons. The
358 level of redundancy overall was ~51% for the liver confinement libraries.

359 **[Insert Figure 2]**

360

361 A number of the liver clones had been generated by a redundancy subtraction procedure
362 described in section 2.6. One of the redundancy-subtracted libraries (RTGL5) was a
363 direct subtraction from the ‘forward late’ library (RTGL3) and there were approximately
364 equal numbers of clones with data from each. The redundancy-subtracted library
365 produced 35% more unique clones than the source library. Furthermore, two highly
366 represented genes (apolipoprotein A-I-1 and EST16605) were reduced in representation
367 from 23% to 3% and from 16% to 8% respectively in the redundancy-subtracted library.

368

369 *3.3 Characterisation of expression profiles.*

370 A list of clones (964) considered to be differentially regulated over the complete time
371 course was generated by a combination of data analysis approaches. Instead of restricting
372 the analysis to one very stringent statistical test, lists of genes whose expression was
373 altered by exposure to confinement were generated by a number of tests and how these
374 lists overlapped was taken into account before deciding on the most relevant genes. The

375 two main approaches were an ANOVA over time with multiple test correction
376 (Benjamini and Hochberg False Discovery Rate) and a t-test comparing stressed samples
377 with their corresponding controls. Analysis of the confinement stressor by microarray
378 analysis clearly demonstrated that the most significant gene expression changes occurred
379 over the 24 h to 168 h time period with a general return to control levels by 504 h.
380 Changes in expression levels over the first 6 h were evident for only a few genes.

381

382 As stated above most of the clones were unknown at the time the arrays were printed and
383 as a result many genes were represented multiple times on the array. This allowed
384 examination of the reproducibility of the array. The genes most frequently represented
385 were the haptoglobin precursor (101x), EST10729 (28x), CIRBP (21x) and complement
386 C3-1 (71x). There were however 110 instances of the haptoglobin precursor on the whole
387 array and 9 instances not showing significance. On inspection of the expression patterns
388 it was clear that all 110 instances showed the same clear expression profile. Similarly all
389 instances of EST10729 show a common expression pattern. On the other hand, there were
390 over 1000 instances of complement component C3-1 on the whole array yet only 71 of
391 these clones were identified as significantly differentially expressed. That is, the
392 expression pattern for all instances of complement component C3-1 showed no common
393 pattern suggesting the detection of changes in expression level of this gene is probably
394 due only to its high representation on the array.

395

396 A shorter list of 314 differentially expressed clones was generated using the more
397 stringent Bonferroni multiple test correction. Of these clones 138 (44%) provided quality

398 sequence information. Uninformative clones were the result of a combination of factors:
399 not all clones were selected for sequencing, some selected clones gave no sequence
400 information, some gave poor quality sequence and some gave less than 100 bases of
401 quality sequence. The 138 clones were composed of 39 different contigs with
402 identification of 28 genes, leaving unidentified a number of EST contigs and singletons.
403 The list of significant genes comprised predominantly genes originally isolated from liver
404 and brain libraries. When compared to the whole array (953 annotated genes) using the
405 GOTree Machine (GOTM) program (Zhang et al., 2004), no biological process category
406 was over-represented at levels 4 or 5. However, in a broader context (i.e. levels above 4
407 and 5) the “Response to stimulus” category was over-represented ($P < 0.01$). Also in the
408 broader context, the cellular component category, “Extracellular region” was over-
409 represented ($P < 0.01$). Genes that fall into these categories include: (response to stimulus)
410 haptoglobin, complement factor H-related protein 1, fibrinogen beta polypeptide,
411 complement component factor H, cold-inducible RNA binding protein and (extracellular
412 region) haptoglobin, complement factor H-related protein 1, fibrinogen beta polypeptide,
413 procollagen type VIII alpha 1, inter-alpha (globulin) inhibitor H2 and secreted
414 phosphoprotein 2. There are, however, too few annotated genes (24) in the list of 314
415 differentially expressed genes to carry out significant Gene Ontology analysis of
416 confinement stress in the liver.

417

418 A k-means clustering of the 964 clone list suggested six main expression patterns (Figure
419 3). The main group (Set 1 - 332 clones) showed up-regulation at 24 h and 168 h and a
420 return towards the control level by 504 h. The seminal gene in this list was the

421 haptoglobin precursor but it also included fibrinogen (beta and gamma polypeptides). A
422 second group (Set 2 - 94 clones) also showed up-regulation at 24 h and 168 h and a return
423 towards the control level by 504 h. Despite this similarity the component sequences of
424 Sets 1 and 2 were clearly different – for example, Set 2 did not include any of the 110
425 instances of haptoglobin on the array, instead, the seminal set member was complement
426 factor H. Set 3 (131 clones) was maximally down-regulated at 168 h but showed some
427 down regulation of several members as early as 2 h (RpL7, TC8053 and TC7970). The
428 seminal member of this group was CIRBP (cold-inducible RNA-binding protein) but it
429 also included alpha-1-antitrypsin homolog, RpL35 and AMBP protein precursor. Set 4
430 (107 clones) was similar to Set 3 in being down regulated over 24 h and 168 h: in fact
431 down regulation of these genes in the stressed group at 168 h and 504 h was more
432 pronounced when compared to expression levels in the control samples which were
433 markedly up-regulated relative to the earlier time points. This is clearer in TC8200 than
434 14-3-3 (see Figure 4). There is no clear characteristic sequence in this group but the tissue
435 origins of the clones in this set were heavily biased towards brain rather than liver
436 libraries. Set 5 (58 clones) showed immediate down regulation at 2 h, followed by up
437 regulation over 6-24 h, then a second down regulation at 168 h before returning to normal
438 at 504 h. The seminal member was alpha1-acid glycoprotein (orosomuroid) but the set
439 also included serum albumin. The final set (Set 6 -103 clones) also showed early down-
440 regulation over 2-6 h then a steady up-regulation from 24 h to 504 h. The seminal
441 members of Set 6 were EST10729 and ceruloplasmin. In this set control samples showed
442 a similar expression pattern to that in stressed fish but generally of a lesser magnitude.

443

[Insert Figure 3]

444 Overall, the expression patterns that were seen in the stressed fish were also seen, though
445 to a more muted extent in the 6 h and 24 h control samples. This corresponds to the
446 unattributable elevation of plasma cortisol levels in the ostensibly undisturbed control
447 fish described above and evident in figure 1b.

448

449 To determine whether the pattern of gene expression in response to confinement varied
450 between individual fish an ANOVA was carried out for specific time points. Analysis of
451 haptoglobin (all instances on the array) at 168h showed that fish 191 was clearly very
452 different from fish 190. Fish 191 was notable within this group of confined fish in that its
453 plasma cortisol levels were atypically low (16.5 ng/ml) compared to those of the others in
454 the group (295.4 ng/ml, 179.9 ng/ml and 44.7 ng/ml for fish 190, 188 and 181
455 respectively). At this time point the ranking of the individual haptoglobin responses
456 matched that of the cortisol ranking.

457

458 *3.4 Quantitative PCR*

459 To validate the microarray results two genes were selected from each of the six k-means
460 cluster groups for real time RT-PCR (qPCR). Primer sequences were generally based on
461 actual clone sequences on the array (with reference to the contig) rather than homologous
462 database sequences (but see Table 1). The 2 h time point was omitted from the qPCR
463 experiment as the microarray suggested expression changes were small over the first 6 h.
464 Generally the same five fish (both control and stress) were used in the qPCR experiment
465 as were used in the microarray experiment. Two housekeeping genes (β -actin and 18S
466 ribosomal RNA gene) were shown to remain at a consistent level between the control and

467 stress groups, and over time. However, there was some inter-individual variability in the
468 expression of these genes and therefore both genes were averaged for use in normalising
469 expression levels. All expression levels were related to the 0 h control using a calculation
470 method based on differences in Ct and amplification efficiency (Pfaffl, 2001).

471

472 All control samples gave a very similar expression pattern with a general rise after 24 h
473 through 168 h and 504 h. Although changes in gene expression patterns detected over
474 time in the stressed fish generally showed good correlation between qPCR and
475 microarray methods (see below) the magnitude of expression change was often reported
476 by qPCR as being greater than that detected on the microarray. Sets 1 and 2 showed
477 quite similar expression patterns with maximum expression over 168 h and 504 h: this
478 maximum appeared to be reached somewhat later in Set 2. Maximum relative changes in
479 expression detected by qPCR were ~13-fold and ~3.5-fold compared to ~2.2-fold and
480 ~1.8-fold by microarray for haptoglobin and β -fibrinogen respectively (both Set 1). Sets
481 3 and 4 also showed up-regulation with time, however expression appeared to increase in
482 two steps, from 0 h to 6 h then 24 h to 504 h with a plateau of expression between 6 h and
483 24 h. The maximum expression levels in these two sets at 504 h were very similar
484 between the stress and control groups with at least CIRBP suggesting a late down-
485 regulation in the stress group compared to the control group. Set 5 showed maximum
486 expression levels at 6 h but quite an irregular pattern over time in both control and stress
487 groups. Set 6 genes were up-regulated over time with a slight tendency to dip between 6 h
488 and 24 h before increasing again through 504 h.

489

490 As mentioned above the magnitude of expression changes as measured by microarray
491 were more muted than those detected by qPCR, however the patterns of expression
492 generally correlated well between both methodologies. Correlations were determined for
493 each fish individually and were found to be significant ($P < 0.05$) for 8 of the 12 genes
494 examined with correlation coefficients for haptoglobin and EST10729 of 0.67 and 0.90
495 respectively. Neither of the two genes of Set 5 correlated significantly between
496 methodologies but both genes of Sets 1, 2 and 6 did correlate significantly.

497

498 **4. Discussion**

499 The elevation of plasma ACTH and plasma cortisol in the confined fish clearly indicated
500 that the stressor employed in these studies activated the hypothalamic-pituitary-interrenal
501 axis in a manner consistent with previous studies using this approach (Pottinger et al.,
502 1994). Plasma cortisol levels in the confined fish displayed a profile typical of rainbow
503 trout subjected to a chronic stressor with significantly elevated levels during the early
504 stages of confinement being followed by an acclimatory return to baseline levels within
505 336 h. Among the control fish the range of mean plasma cortisol values observed (0.8 –
506 38.7 ng/ml) was greater than is normally typical of unstressed trout due in large part to
507 elevated levels in several consecutive samples between 2 h and 48 h after the start of the
508 study. There is no clear explanation for this and we assume that some unaccounted for
509 disturbance of these tanks took place during the sampling period. The six control tanks
510 that were sampled at 4, 6 and 24 h when cortisol levels were most elevated were sampled
511 again at 96 h, 336 h and 504 h respectively at which time levels were typical of
512 undisturbed fish. To ensure a contrast between stressed and unstressed individuals

513 control fish liver samples for the SSH exercise were selected from individuals whose
514 plasma cortisol levels at the time of sampling did not exceed 15 ng/ml.

515

516 Exposure of trout to prolonged confinement is characteristically accompanied by
517 disturbances in plasma glucose levels and plasma lactate levels (Trenzado et al., 2003)
518 and both responses were evident in the present study. Perhaps surprisingly, no short-term
519 elevation of plasma glucose was detected initially in the confined fish, although levels
520 were elevated during the 24h – 168h period. Short-term glucose elevation is a widely
521 observed response of fish to acute stressors so the absence of this response is puzzling. It
522 is possible that the severity of the initial stressor was insufficient to cause a change in
523 circulating catecholamine levels (Perry and Bernier, 1999), considered to be the mediator
524 of stress-induced hyperglycaemia in fish. The short period of hyperlactemia that occurred
525 in confined fish early in the time-course was presumably associated with the respiratory
526 consequences of chasing, netting and transfer to the confinement tanks and was rapidly
527 ameliorated within 2 – 4 hours. The occurrence of slightly elevated plasma lactate levels
528 in the control fish between 4h and 168 h is not easily explained but does coincide with the
529 anomalous elevation of plasma cortisol in the control fish. Overall, the experimental data
530 indicate that the response of these fish to confinement was consistent with previous
531 findings and provided a suitable vehicle for further investigation of gene expression in the
532 liver.

533

534 The analysis of gene expression in liver tissue from confined fish that is presented here is
535 part of a larger EU study "STRESSGENES: A Functional Genomics Approach to

536 Measuring Stress in Fish Aquaculture" (Q5RS-2001-002211) that includes analysis of
537 gene expression during exposure to a confinement stressor in other tissues (head kidney,
538 brain, pituitary and gill) and additional stressors (temperature shift, hypoxia, salinity
539 stress and pathogen exposure) in a range of relevant tissues. For each tissue SSH libraries
540 were constructed and 'pre-arrays' were hybridised to eliminate unchanging genes. Initially
541 arrays comprising unselected clones (Phase 1 arrays) were constructed followed by one
542 array using a selected clone set (Phase 2 array). For the experiment reported here a Phase
543 1 array was used: a consequence of this is that there was not full sequence analysis of the
544 clones.

545

546 As noted above, the list of genes whose expression was significantly altered comprised
547 predominantly genes originally isolated from liver and brain libraries and these fell
548 largely into one biological process category (response to stimulus) and one cellular
549 component category (extracellular region). Analysis of the gene expression profile in
550 liver tissue during confinement revealed a number of significant clusters. The major
551 patterns comprised genes that were up-regulated at 24 h and beyond, the primary
552 examples being haptoglobin, fibrinogen, TC8442, ceruloplasmin and EST10729.
553 Haptoglobin expression was up-regulated at 24 h and transcripts maintained this high
554 level through to the 168 h sample. After 504 h (21 days) continuous confinement
555 expression levels approached but had not yet reached control levels. Quantification of
556 gene expression levels by qPCR confirmed the microarray expression pattern and showed
557 an up-regulation of approximately 13-fold over the zero time point control and
558 approximately 8-fold over the paired control. Of all the genes validated by qPCR this was

559 the greatest change in the magnitude of expression observed but this does not rule out the
560 possibility of greater changes in other genes that were not scrutinized with qPCR – for
561 example, TC17071 appeared more differentially regulated on the microarray than many
562 of the haptoglobin clones. Although not evident from the microarray, haptoglobin was
563 up-regulated 4-5-fold by 6 h. In functional terms, haptoglobin is a prominent acute phase
564 protein in man and in most mammalian species studied. Circulating levels of this protein
565 can change by between 2-fold to over 10-fold depending on the species (Petersen et al.,
566 2004). In fish (*O.mykiss*) elevated plasma levels of haptoglobin have been identified after
567 a variety of bacterial and viral challenges, but changes in haptoglobin levels have not
568 previously been linked to a non-immunological stressor (Bayne et al., 2001). In rainbow
569 trout, 24 h after receiving a bacterin injection, up-regulation of haptoglobin at the
570 transcript level on an oligo-microarray was limited (2-fold) but qPCR showed large
571 variation in individual fish response (Gerwick et al., 2006). In other studies on rainbow
572 trout, there was no significant change in brain haptoglobin expression following a
573 handling stress (Krasnov et al., 2005a) in liver haptoglobin expression after toxicant
574 exposure (Krasnov et al., 2005b) or in aflatoxin-induced hepatocellular carcinoma (Tilton
575 et al., 2005). In pigs haptoglobin levels are not elevated in response to cold, heat or
576 transport stressors (Hicks et al., 1998). Haptoglobin is however elevated in disease and
577 subclinical states suggesting that in pigs at least it is a good indicator of the health status
578 of the animal (Petersen et al., 2004). In calves stress related to housing on a slippery floor
579 raised levels of the acute phase protein serum amyloid A but not that of haptoglobin
580 (Alsemgeest et al., 1995).

581

582 The main role of haptoglobin appears to be in conserving haemoglobin, haem and iron
583 after their release from damaged red blood cells and the prevention of oxidative stress.
584 Scavenging iron is also believed to be important in preventing the growth of iron-
585 requiring bacteria (Bullen, 1981). Genes coding for proteins such as albumin,
586 ceruloplasmin, hepcidin, lactoferrin, transferrin, ferritin and hemopexin might be
587 expected to play a similar role. Differential regulation of both ceruloplasmin and albumin
588 was identified in this study (though controls and stress were very similar) but neither
589 hepcidin nor lactoferrin were selected for the array (suggesting no treatment-related
590 change in their expression levels) and neither ferritin nor transferrin showed any clear
591 change on the microarray. Transferrin has been described as both a positive and negative
592 acute phase protein in different species and there is a suggestion that it is a positive acute
593 phase protein under an inflammatory stimulus in trout (Bayne and Gerwick, 2001). Apart
594 from alterations in haptoglobin itself there was minimal evidence in the present study that
595 exposure to a prolonged stressor produced alterations in other factors responsible for iron
596 metabolism/storage.

597

598 Serum albumin and alpha 1-acid glycoprotein (orosomuroid) fall within the same
599 expression cluster (Set 5 in Figure 3) and are again considered to be acute phase proteins
600 in several mammalian species (Gabay and Kushner, 1999). On the microarray both
601 transcripts demonstrate a very early (2 h) down-regulation, followed by rapid up-
602 regulation by 6 h and then a second more prolonged down-regulation over 168 h.
603 However, neither of these gene expression patterns detected on the microarray correlated
604 closely with the pattern determined by qPCR. Both genes were up-regulated at 6 h and

605 although orosomuroid expression in stressed fish showed a downward trend from 6 h to
606 504 h, serum albumin showed no tendency for reduced expression over the later time
607 points. (Relative to the paired control samples, which exhibited some variation with time,
608 serum albumin did show a downward trend). The absence of the 2 h time point from the
609 qPCR does not preclude the possibility of an early 2 h down-regulation. Serum albumin is
610 normally considered a negative acute phase protein as it decreases under an acute phase
611 stress. Here, however, the expression pattern as it relates to the abundance of RNA
612 transcript seems much more complex. Whether this is a consequence of message levels
613 not necessarily reflecting protein levels, or that confinement stress is not a severe enough
614 stressor, or that stress responses as characterised in mammals are not wholly applicable to
615 non-mammalian vertebrates, is unclear from the present study. It should be noted that to
616 treat the full period of confinement as the imposition of a homogeneous stressor upon the
617 fish is probably a gross simplification. The nature of the stressor as perceived by the fish
618 is likely to alter over time, from being primarily a disturbance/novelty/unfamiliar
619 environment combined with spatial restriction in the first few hours after transfer to the
620 confinement tank, to a primarily social stressor after more time has elapsed. Acclimation
621 to the confinement environment is quite rapid when fish are held in isolation, but requires
622 increasingly longer as the size of the interacting group increases (Pottinger and Pickering,
623 1992).

624

625 Orosomuroid (ORM1), like many acute phase proteins, does not have a well-defined role
626 although it is considered both anti-inflammatory and immunomodulatory. It is reported to
627 interact with serum albumin (Krauss et al., 1986), which possibly explains the broadly

628 similar gene expression patterns observed for the two transcripts, and with plasminogen
629 activator inhibitor type 1 (PAI-1). When orosomucoid is upregulated (6 h), PAI-1 (a
630 serpin) is maintained in a highly active form: proteinase inhibitor activity is therefore
631 maximal over this period before it falls quite dramatically over the 24 h to 168 h period.
632 High levels of proteinase inhibitory activity may allow the build up of the acute phase
633 proteins and subsequent reduction of this activity may facilitate the removal of the acute
634 phase proteins and return to a pre-challenge steady-state. The very early down regulation
635 (at 2 h, seen on the microarray) may be the consequence of some immediate need for
636 protease activity – possibly to do with activation of complement or blood clotting
637 cascades. The absence of correlation in Set 5 may suggest that this cluster is weakly
638 assigned.

639

640 Consistent with this speculation is the fact that another group of functionally related
641 proteins that appear from the microarray to be down-regulated late in the stress process
642 are the protease inhibitors alpha-1-antitrypsin homolog and alpha-2-HS glycoprotein
643 precursor (a cysteine protease inhibitor). Both are down-regulated through 24 h and 168
644 h. Although qPCR shows up-regulation of alpha-1-antitrypsin homolog over 6 h and
645 again at 504 h, the net effect is one of down-regulation compared to the paired controls.
646 Alpha2-macroglobulin (A2M) is a major acute phase protein in many species but has not
647 been identified as such in trout (Bayne and Gerwick, 2001). Like serum amyloid A (see
648 below) it does not appear in an identifiable form on the array. Alpha2-macroglobulin is
649 also an antiproteinase inhibitor acting on enzymes such as trypsin, thrombin and
650 collagenase. It is believed to interact with alpha1-microglobulin/bikumin precursor

651 (AMBP). Interestingly AMBP was identified as a significantly differentially regulated
652 gene and was found in the same cluster (Set 3) as alpha-1-antitrypsin homolog.

653

654 Differences in immune system function between mammals and fish are very significant.
655 Fish are dependent on innate, non-lymphoid mechanisms to defend themselves against
656 infection and trauma, whereas mammals exploit an adaptive immune system based upon
657 T- and B-cells. Fish are therefore much more dependent than mammals on a non-specific
658 response focusing on defensive proteins dissolved in body fluids and possibly have
659 adapted their functions accordingly. There are some immune-related genes that are,
660 perhaps surprisingly, missing from the list of differentially expressed genes obtained
661 during the present study. Serum amyloid A does not appear in an identifiable form on the
662 array: its absence from the liver confinement SSH libraries suggests it is not a significant
663 part of the non-specific stress response in trout. The pentraxins, although represented on
664 the array, show no significant change in expression. Two clearly different pentraxins are
665 on the array: one is the published SAP-like pentraxin (Jensen et al., 1997) but the second
666 has almost equal homology to human serum amyloid P and human C-reactive protein (see
667 accession nos. CR944257 and CR944502). Although not significant, the SAP-like
668 pentraxin appears to be down-regulated from 6 h and maximally at 168 h whereas the
669 other pentraxin appears to be up-regulated at 168 h. If there is an acute phase response to
670 a prolonged non-invasive stressor in trout it does not follow the pattern found following a
671 pathogenic challenge.

672

673 Also of interest is the relative absence of differentially regulated genes associated with
674 gluconeogenesis and glycogenolysis in the liver confinement study. Intuitively, an early
675 up-regulation and a later reversal of this process might be anticipated, in order to support
676 the hyperglycaemic response normally seen in stressed fish. It is of course possible that
677 the severity of the confinement stressor is not substantial enough to require changes in the
678 expression levels of key genes involved in gluconeogenesis and instead post-translational
679 modifications (phosphorylation, etc) are sufficient to regulate the process. Indeed the
680 absence of an immediate rise in blood glucose levels in this confinement experiment
681 might explain why gluconeogenesis- and glycogenolysis- related genes were not to the
682 fore in the microarray analysis. A gene identified as a glycogen synthase kinase binding
683 protein (zebra fish; *Danio rerio*) is clearly upregulated at 24 h and 168 h though the
684 relevance of this event is presently unclear. It is known that mammals mount qualitatively
685 different acute phase responses to different stimuli and indications from the literature are
686 that fish do likewise.

687

688 Krasnov et al (2005a) used similar methods to those employed in the present study to
689 investigate the effects of handling stress on gene expression in both brain and head
690 kidney of rainbow trout. Although this earlier study found changes in some genes in
691 common with the present study (troponin C, immunoglobulin epsilon receptor, 14-3-3)
692 and these expression patterns over time appear similar, the majority of the genes for
693 which significant alterations in expression were reported are quite different. This is
694 probably in part due to the different tissues studied and in part due to the choice of clones
695 in the microarray design, but it may also indicate that the response to a short handling

696 stress (Krasnov et al., 2005a) is quite different to that arising from a continuous
697 confinement stressor (this study). Previous studies that have examined gene expression in
698 trout liver tend to relate to toxicological challenge (Krasnov et al. 2005b; Hook et al.,
699 2006; Tilton et al., 2007). What most of these studies have in common with each other
700 and with the current study is that the effects on gene expression are small, generally
701 approximating to 2-3 fold although changes quantified by qPCR are often larger than
702 those detected by microarray. A bacterin challenge shows very large changes in liver
703 expression of hepcidin and diacylglycerol *O*-acyl-transferase neither of which are seen to
704 respond to confinement stress yet haptoglobin and DRTP1 are up-regulated in response to
705 both stressors (Gerwick et al., 2007). There appear to be clear distinctions in gene
706 expression patterns between different stressors: a gene that may be strongly up- or down-
707 regulated in response to one stressor may not be responsive to a different type of stressor.
708 This is exemplified by the diverse nature of the response to a group of model toxicants
709 (Hook et al., 2006).

710

711 In general the qPCR results confirmed the microarray results which therefore suggests the
712 latter analysis can be used confidently to provide a “global” picture of the gene
713 expression response to prolonged confinement stress in fish. Some patterns did conflict
714 but this was probably a result of the weaker clusters where expression changes were quite
715 small on the array. It has been reported previously that correlations between microarray
716 and qPCR are best when expression changes are 2-fold or more (Morey et al., 2006). It
717 should also be noted that only two genes were checked by qPCR from each cluster and
718 that better correlations would have been achieved if only the most differentially

719 expressed genes were validated. Ultimately,, protein levels (both in each relevant tissue
720 and in plasma) will have to be measured to get a clear indication of what is the full
721 physiological response of the fish to confinement stress. In many cases though this will
722 await the production of antibodies with specificity to fish proteins.

723

724 Overall, the present study indicates that while the primary role of the liver during acute
725 and chronic stress may be linked with the provision of energy, this role is not reflected in
726 the patterns of gene expression. Instead, the up-regulation of genes in trout during
727 exposure to a non-invasive stressor seems primarily to be associated with the non-specific
728 defence. The results perhaps highlight the need for a multifaceted approach to the
729 analysis of complex physiological processes such as the stress response where
730 examination of neither expression profiles nor key indicator endpoints alone provides a
731 full picture of the events taking place.

732

733

734 **Acknowledgements**

735 The authors thank T. R. Carrick (CEH) for technical assistance. The authors would also
736 like to thank S. Mativet and L. Dengreville (INRA, Rennes) for sequence analysis, and
737 Margaret Hughes (University of Liverpool) for printing and microarray assistance. This
738 project was part funded by the European Commission (Q5RS-2001-02211), Enterprise
739 Ireland and the Natural Environment Research Council of the United Kingdom.

740

741 **References**

742

743 Alsemgeest, S. P., Kalsbeek, H. C., Wensing, T., Koeman, J. P., van Ederen, A. M.,
744 Gruys, E., 1994. Concentrations of serum amyloid-A (SAA) and haptoglobin
745 (HP) as parameters of inflammatory diseases in cattle. *Vet Q.* 16, 21-23.

746

747 Balm, P. H. M., Pottinger, T. G., 1993. Acclimation of rainbow trout (*Oncorhynchus*
748 *mykiss*) to low environmental pH does not involve an activation of the pituitary -
749 interrenal axis but evokes adjustments in branchial ultrastructure. *Can. J. Fish.*
750 *Aquat. Sci.* 50, 2532-2541.

751

752 Bayne, C. J., Gerwick, L., 2001. The acute phase response and innate immunity of fish.
753 *Dev Comp Immunol.* 25, 725-43.

754

755 Bayne, C. J., Gerwick, L., Fujiki, K., Nakao, M., Yano, T., 2001. Immune-relevant
756 (including acute phase) genes identified in the livers of rainbow trout,
757 *Oncorhynchus mykiss*, by means of suppression subtractive hybridization. *Dev*
758 *Comp Immunol.* 25, 205-217.

759

760 Bonga, S.E.W., 1997. The stress response in fish. *Physiol. Rev.* 77, 591-625.

761

762 Bullen, J. J., 1981. The significance of iron in infection. *Rev Infect Dis.* 3, 1127-38.

763

764 Carninci, P., Shibata, Y., Hayatsu, N., Sugahara, Y., Shibata, K., Itoh, M., Konno, H.,
765 Okazaki, Y., Muramatsu, M., Hayashizaki, Y., 2000. Normalization and
766 subtraction of cap-trapper-selected cDNAs to prepare full-length cDNA libraries
767 for rapid discovery of new genes. *Genome Res.* 10, 1617-1630.
768

769 Gabay, C., Kushner, I., 1999. Acute-phase proteins and other systemic responses to
770 inflammation. *N Engl J Med.* 340, 448-54.
771

772 Gerwick, L., Corley-Smith, G., Bayne, C. J. 2007. Gene transcript changes in individual
773 rainbow trout livers following an inflammatory stimulus. *Fish Shellfish Immunol.*
774 22, 157-171
775

776 Gjoen, H. M., Bentsen, H. B., 1997. Past, present, and future of genetic improvement in
777 salmon aquaculture. *ICES J. Mar. Sci.* 54, 1009-1014.
778

779 Hicks, T. A., McGlone, J. J., Whisnant, C. S., Kattesh, H. G., Norman, R. L. 1998.
780 Behavioral, endocrine, immune, and performance measures for pigs exposed to
781 acute stress. *J Anim Sci.* 76, 474-483.
782

783 Hook, S. E., Skillman, A. D., Small, J. A., Schultz, I. R. 2006. Gene expression patterns
784 in rainbow trout, *Oncorhynchus mykiss*, exposed to a suite of model toxicants.
785 *Aquat. Toxicol.* 77, 372-385
786

787 Hulata, G., 2001. Genetic manipulations in aquaculture: a review of stock improvement
788 by classical and modern technologies. *Genetica* 111, 155-173.
789

790 Huntingford, F.A., 2004. Implications of domestication and rearing conditions for the
791 behaviour of cultivated fishes. *J. Fish Biol.* 65 Issue S1, 122-142.
792

793 Jensen, L. E., Hiney, M. P., Shields, D. C., Uhlar, C. M., Lindsay, A. J., Whitehead, A. S.
794 1997. Acute phase proteins in salmonids: evolutionary analyses and acute phase
795 response. *J Immunol.* 158, 384-92.
796

797 Johnson, E. O., Kamilaris, T. C., Chrousos, G. P., Gold, P. W. 1992. Mechanisms of
798 stress: a dynamic overview of hormonal and behavioural homeostasis.
799 *Neuroscience and Biobehavioural Reviews* 16, 115-130.
800

801 Krasnov, A., Koskinen, H., Pehkonen, P., Rexroad, C. E., Afanasyev, S., Molsa, H.
802 2005a. Gene expression in the brain and kidney of rainbow trout in response to
803 handling stress. *BMC Genomics* 6, 3
804

805 Krasnov, A., Koskinen, H., Rexroad, C., Afanasyev, S., Molsa, H., Oikari, A. 2005b.
806 Transcriptome responses to carbon tetrachloride and pyrene in the kidney and
807 liver of juvenile rainbow trout (*Oncorhynchus mykiss*). *74*, 70-81
808

809 Morey, J. S., Ryan, J. C., Van Dolah, F. M. 2006. Microarray validation: factors
810 influencing correlation between oligonucleotide microarrays and real-time PCR.
811 *Biol Proced Online* 8, 175-193

812

813 Perry, S. F., Bernier, N. J., 1999. The acute humoral adrenergic stress response in fish:
814 facts and fiction. *Aquaculture* 177, 285-295

815

816 Petersen, H. H., Nielsen, J. P., Heegaard, P. M., 2004. Application of acute phase protein
817 measurements in veterinary clinical chemistry. *Vet Res.* 35, 163-187

818

819 Pfaffl, M. W., 2001. A new mathematical model for relative quantification in real-time
820 RT-PCR. *Nucleic Acids Research* 29, 2002-2007

821

822 Pottinger, T.G., 2000. Genetic selection to reduce stress in animals. In: Moberg, G.P.,
823 Mench, J.A. (Eds.), *The Biology of Animal Stress: Basic Principles and*
824 *Implications for Animal Welfare*. CABI Publishing, Oxford, pp. 291-308.

825

826 Pottinger, T. G., Carrick., T. R., 1999. Modification of the plasma cortisol response to
827 stress in rainbow trout by selective breeding. *Gen. Comp. Endocrinol.* 116:122-
828 132.

829

830 Pottinger, T.G., Carrick, T.R., 2001. Stress responsiveness affects dominant-subordinate
831 relationships in rainbow trout. *Horm. Behav.* 40, 419-427.

832

833 Pottinger, T.G., Pickering, A.D., 1992. The influence of social interaction on the
834 acclimation of rainbow trout, (*Oncorhynchus mykiss*), to chronic stress. *Journal*
835 *of Fish Biology* 41, 435-447.

836

837 Pottinger, T.G., Pickering, A.D., 1997. Genetic basis to the stress response: selective
838 breeding for stress tolerant fish. In: Iwama, G.K., Pickering, A.D., Sumpter, J.P.,
839 Schreck, C.B. (Eds.), *Fish Stress and Health in Aquaculture*. Cambridge
840 University Press, Cambridge, pp. 171-193.

841

842 Pottinger, T. G., Moran, T. A. and Morgan, J. A. W. (1994). Primary and secondary
843 indices of stress in the progeny of rainbow trout (*Oncorhynchus mykiss*
844 Walbaum) selected for high and low responsiveness to stress. *Journal of Fish*
845 *Biology* 44, 149-163.

846

847 Price, E.O., 1999. Behavioral development in animals undergoing domestication. *Appl.*
848 *Anim. Behav. Sci.* 65, 245-271.

849

850 Tilton, S. C., Gerwick, L. G., Hendricks, J. D., Rosato, C. S., Corley-Smith, G., Givan, S.
851 A., Bailey, G. S., Bayne, C. J., Williams, D. E., 2005. Use of a rainbow trout
852 oligonucleotide microarray to determine transcriptional patterns in aflatoxin B1-
853 induced hepatocellular carcinoma compared to adjacent liver. *Toxicol. Sci.* 88,
854 319-330

855

856 Trenzado, C. E., Carrick, T. R. and Pottinger, T. G. (2003). Divergence of endocrine and
857 metabolic responses to stress in two rainbow trout lines selected for differing

858 cortisol responsiveness to stress. *General and Comparative Endocrinology* 133,
859 332-340.

860

861 Vandeputte, M., Launey, S., 2004. The genetic management of fish domestication.
862 *Productions Animales* 17, 237-242.

863

864 Wang, C. M., King, W., Woods, C., 2004. Physiological indicators of divergent stress
865 responsiveness in male striped bass broodstock. *Aquaculture* 232, 665-678

866

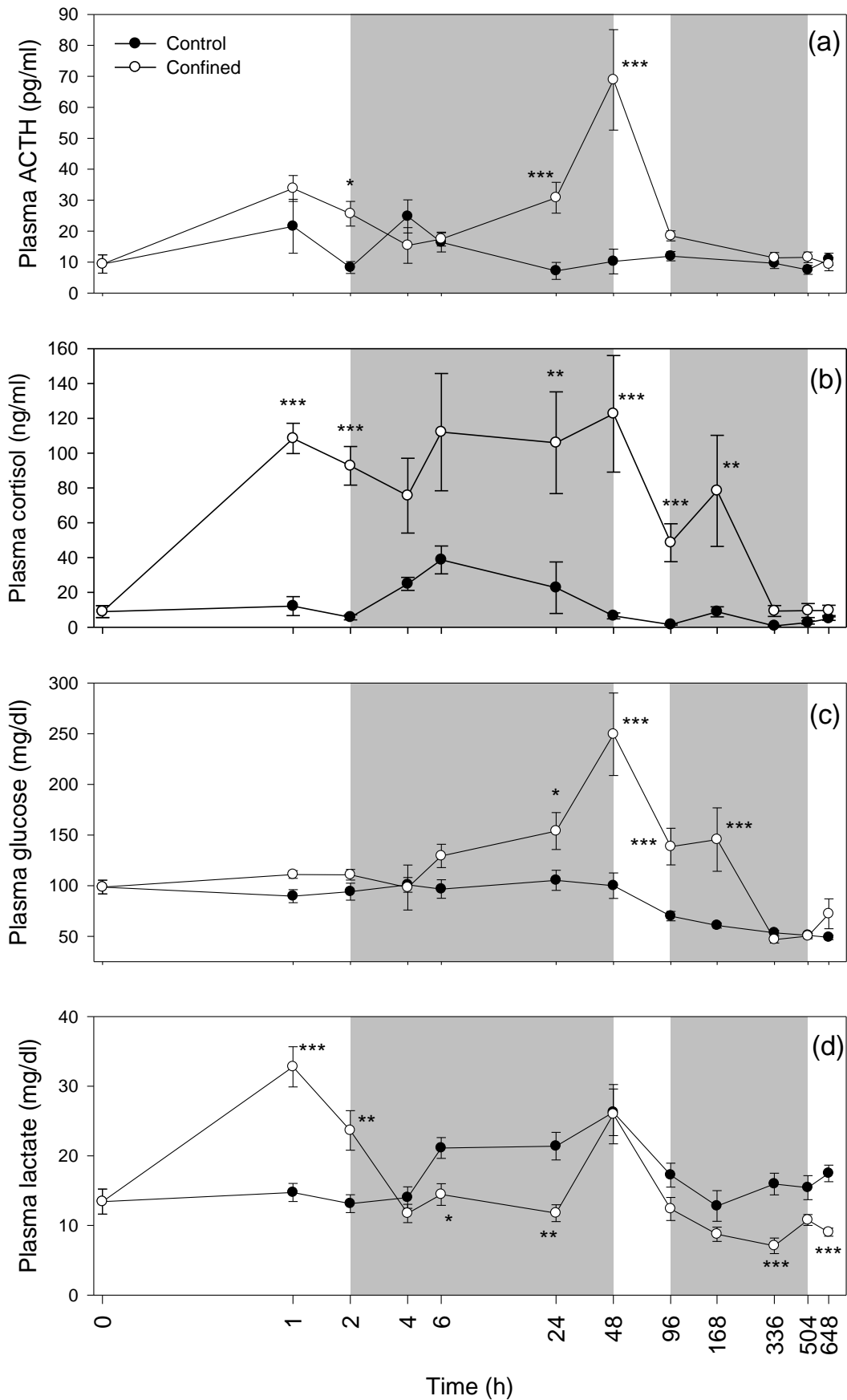
867 Zhang, B., Schmoyer, D., Kirov, S., Snoddy, J., 2004. GOTree Machine (GOTM): a web-
868 based platform for interpreting sets of interesting genes using Gene Ontology
869 hierarchies. *BMC Bioinformatics* 5:16

870

871 Table 1: Primers used for quantitative real-time PCR

Gene	Accession Number	Forward Primer	Reverse Primer
Haptoglobin	CT566464	5'TCCTTCGATAAGACCTGTGCC3'	5'GGAGACTGGCTGATGTCTCA3'
Fibrinogen beta chain	CR944658	5'TGGGTATTCAGGAACAGCCG3'	5'TCGCCTGGAGTCCAGTTATC3'
Complement factor H	CR944614	5'AAGCAAGCTGTCCTGATCCT3'	5'AAACTCAGTGTAAACTGTCTGCTG3'
TC8442	CR94440	5'GGCTCAGCTCATTGAGCAGT3'	5'GCTTCCCTTCTAGTCTCACTCC3'
α -1-Anti-trypsin homolog	CR944146	5'TGCTTCATGGGCAAAGTCA3'	5'TGCCACTTGTTAAAGCGTGA3'
CIRBP	CT567069	5'GTGTTGTTGTTGACCGGATG3'	5'TTGAAATGAATGGCTGACA 3'
14-3-3 Protein β/α	AY370880*	5'TCCGATGTCCACAGAGTCAG3'	5'AAAACGGCATTGATGAAGC3'
TC8200	CR944318	5'GTCAAAGTCTCAATGAACCA3'	5'CCTTCGGCAATCAGATGAA3'
Orosomucoid	CR944165	5'CTGGAGAAATGGGATGAGGA 3'	5'TGGCAGACTGAGACAATCCA3'
Serum albumin 1	TC120523*	5'TGGTTGCTGAGAGTGCAGAG3'	5'TGTAGGCTGGGCAGGTAGAT3'
EST10729	CT566588	5'CCTCTTTCAGTGGTGGTGGT3'	5'CAAGGGTCTCCTCATTCTG3'
Ceruloplasmin	CT565372	5'TGGATGAACGTGGAGCATTAA3'	5'TCATGCATTGTCAGTGGTCA3'
β -actin	AJ438158*	5'ATGGAAGATGAAATCGCCGCA3'	5'TGGCCCATCCAACCATCAC3'
18S Ribosomal RNA	AF308735*	5'ACCACCCACAGAATCGAGAAA3'	5'GCCTGCGGCTTAATTTGACT3'

872 *Primers to candidate genes were generally designed to specific clones on the array with
873 reference to contigs, but where there was any ambiguity NCBI (AY370880) and TIGR
874 (TC120523) database sequences were used.
875



877
878
879

'STRESSGENES' PROJECT

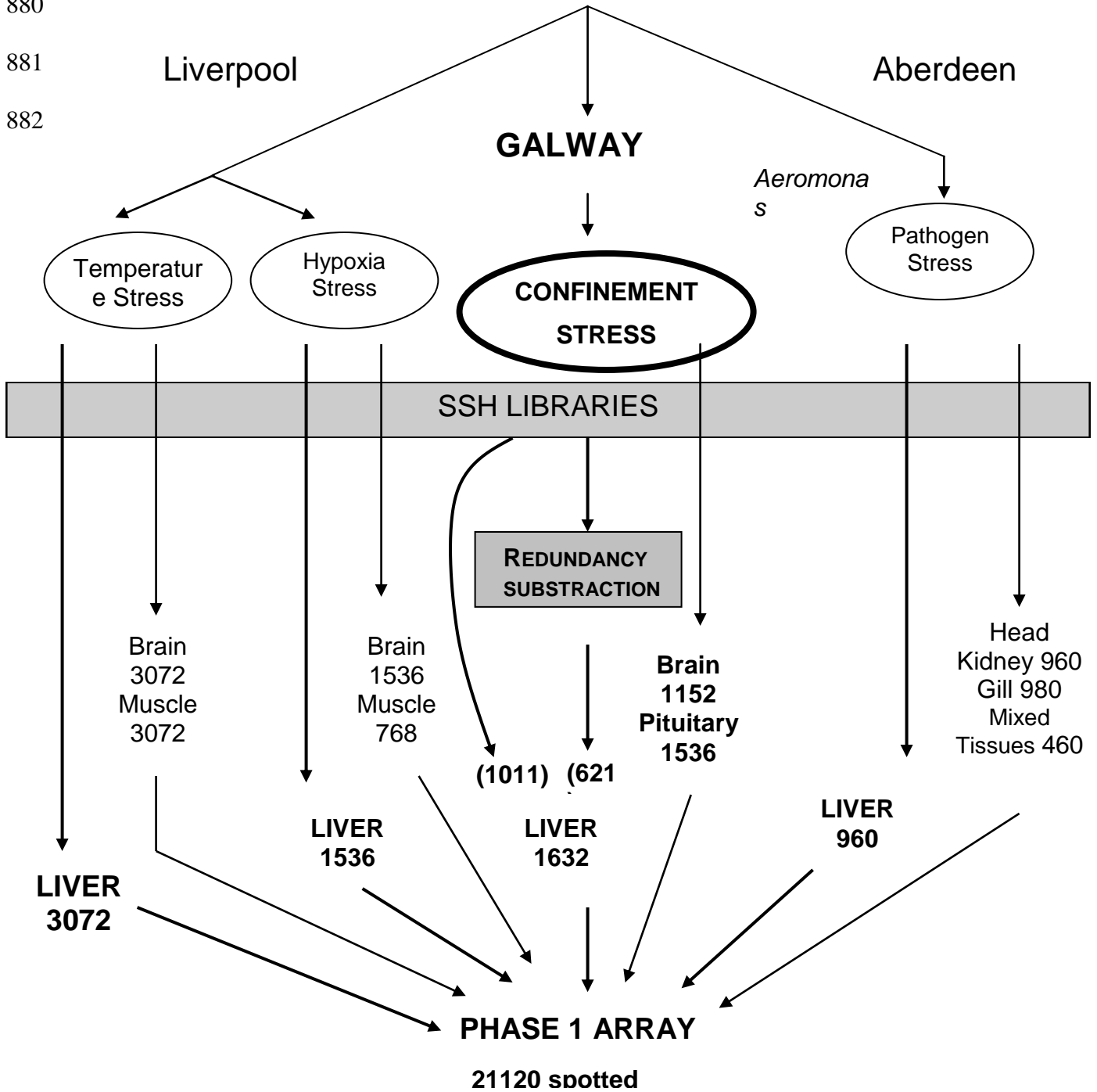
www.irisa.fr/stressgenes

Coordinator: Patrick Prunet

880

881

882



Cairns et al. Figure 2

883 Figure 3: Cairns et al.,

884

885

886

CONTROL

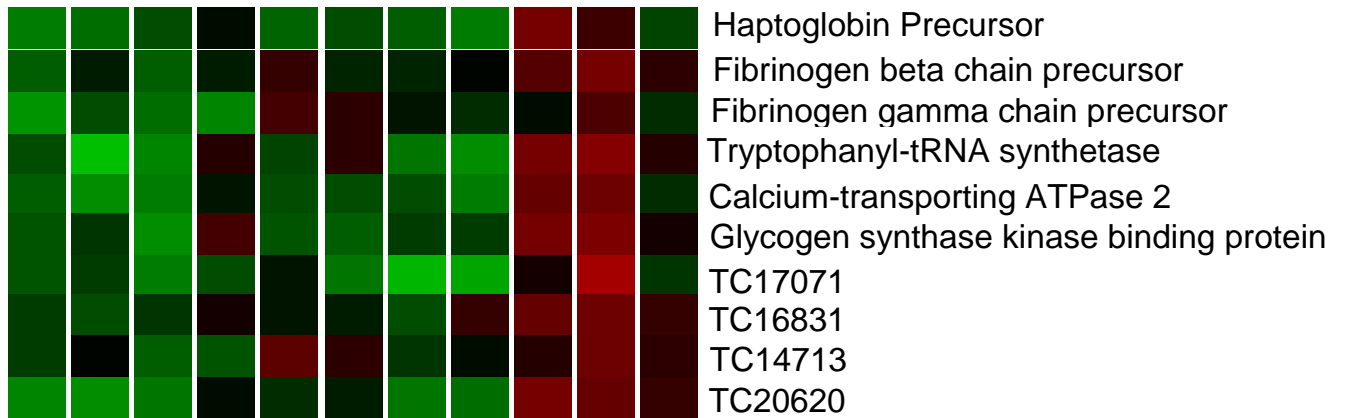
STRESS

887

Set 1

888

0 2 6 24 168 504 2 6 24 168 504 **Hours**

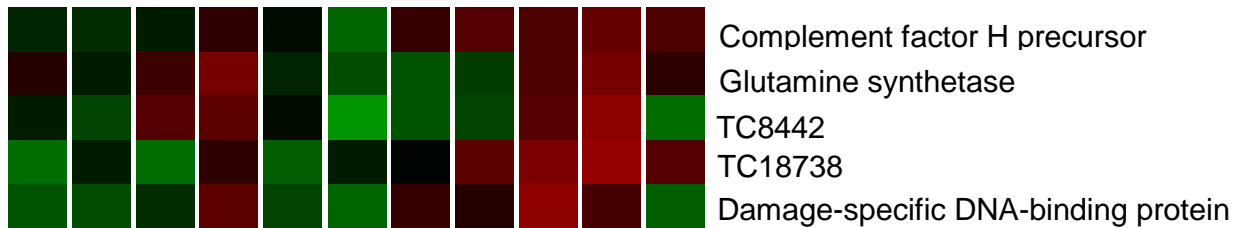


891

892

Set 2

893

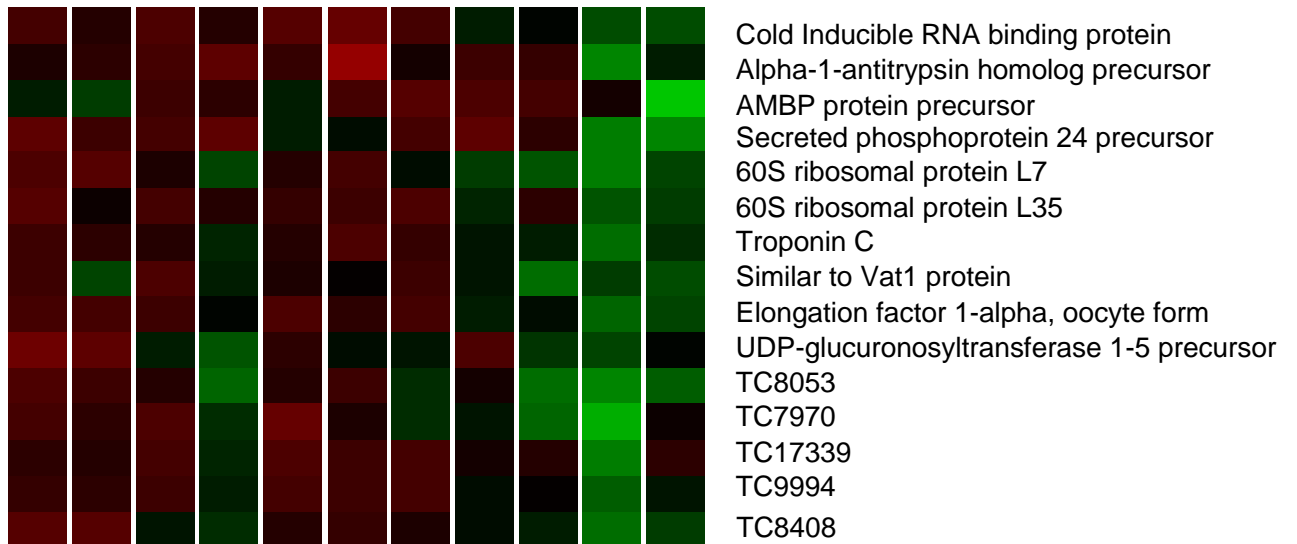


894

895

Set 3

896



897

898

899 **Scale:**

4.0 2.0 1.0 0.5 0.25

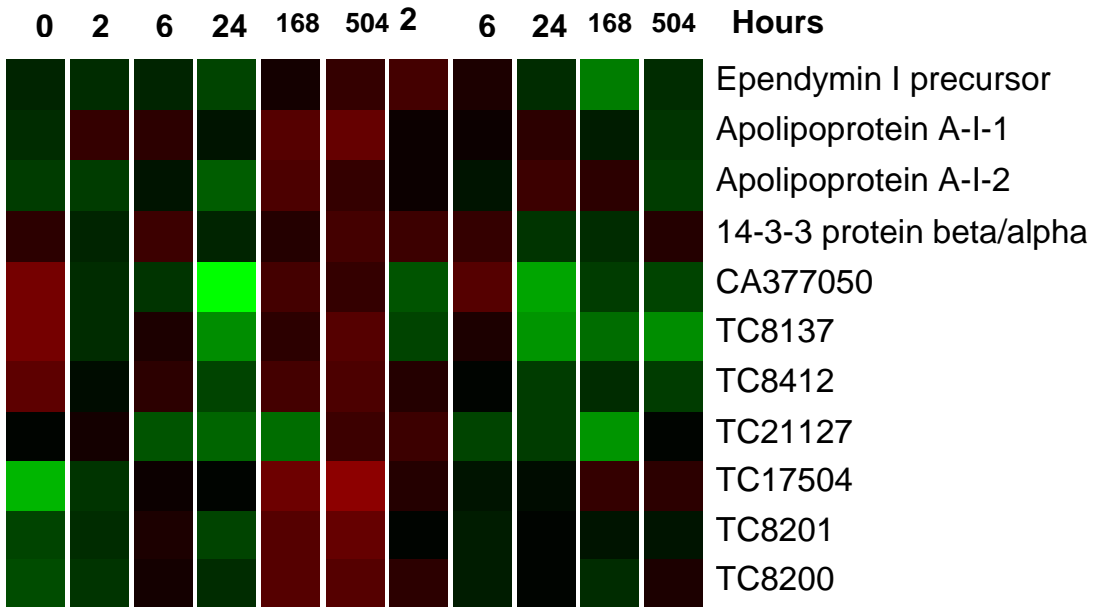


900

901 **Set 4**

902

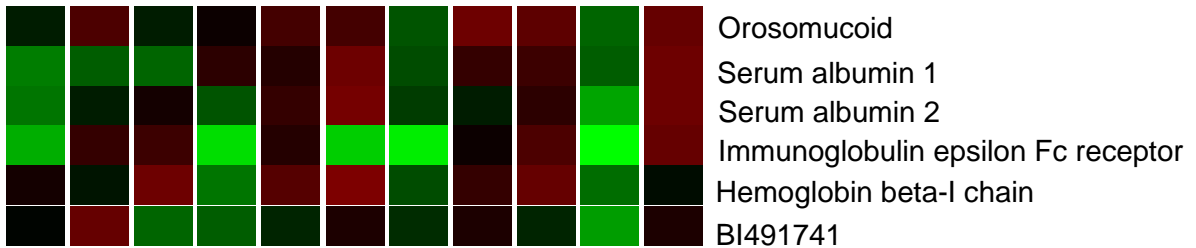
903



904

905

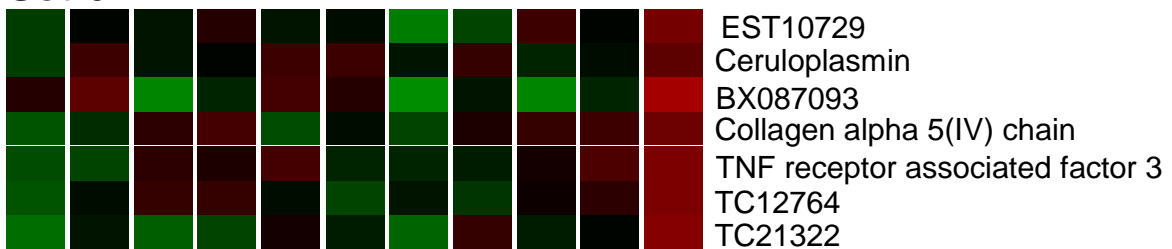
906 **Set 5**



907

908

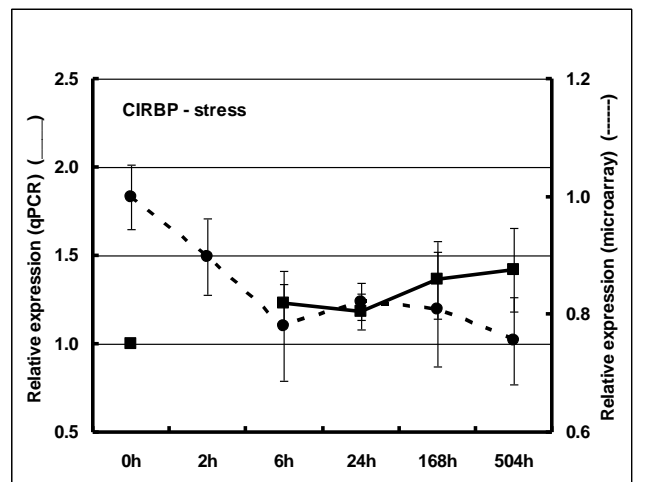
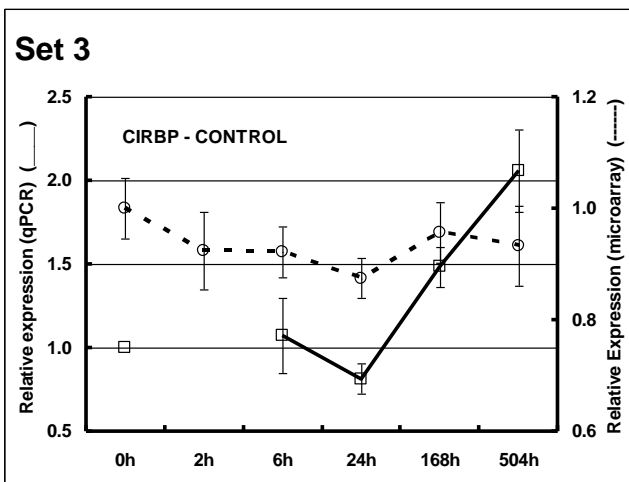
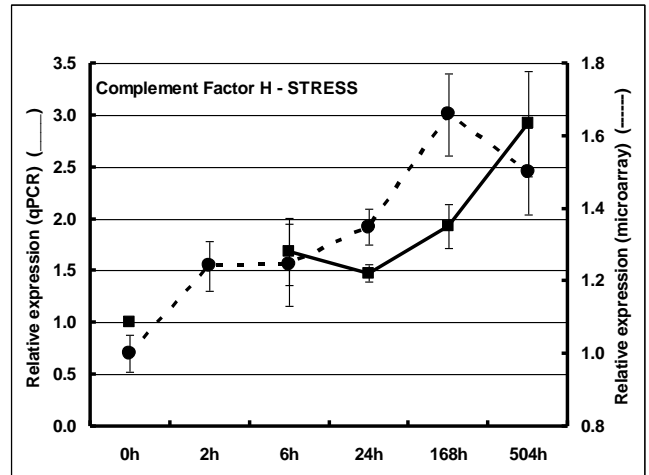
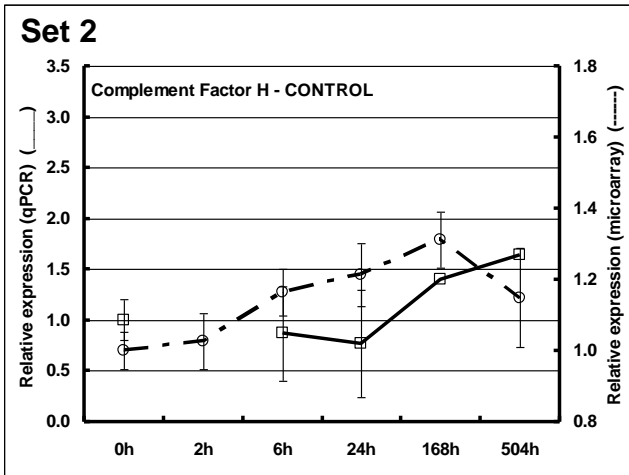
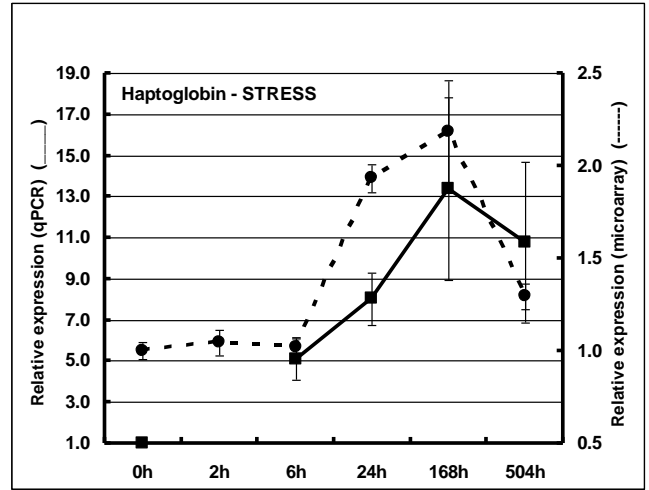
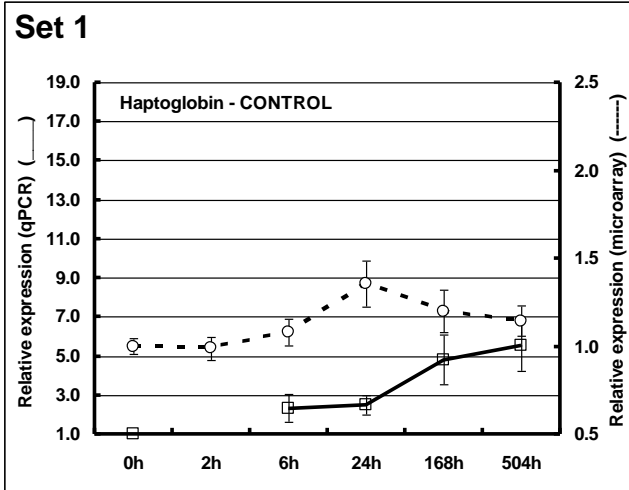
909 **Set 6**

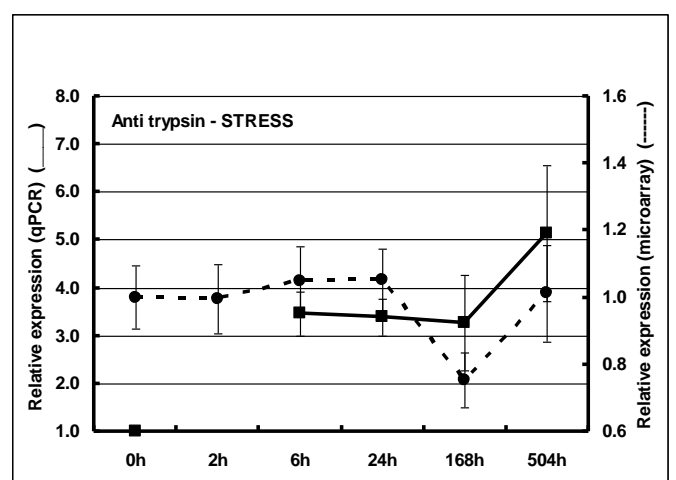
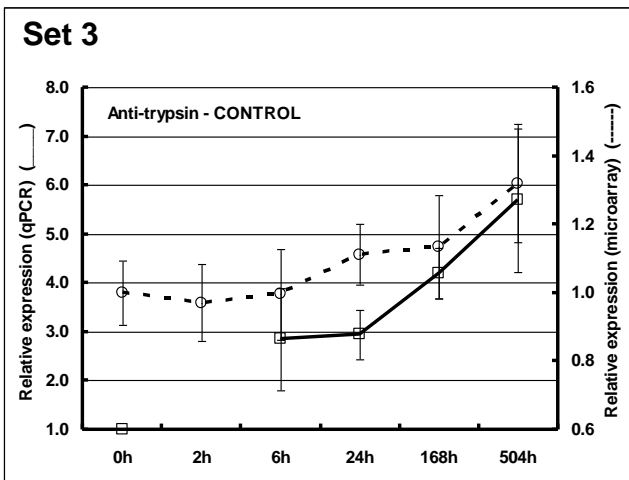
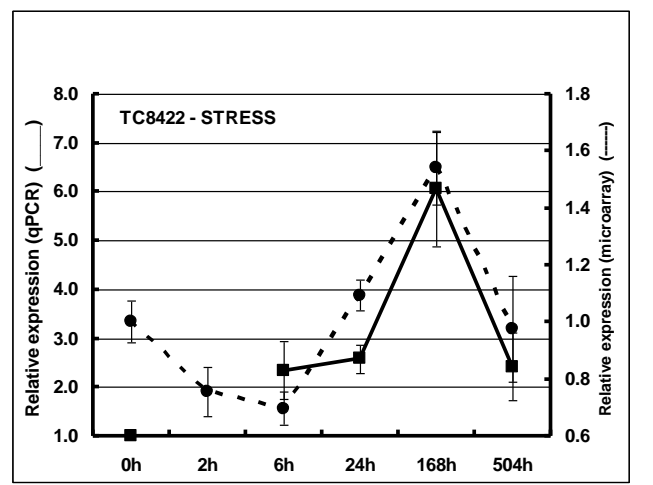
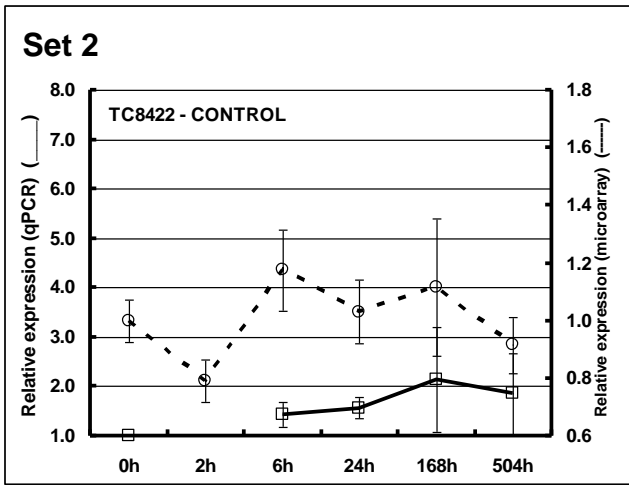
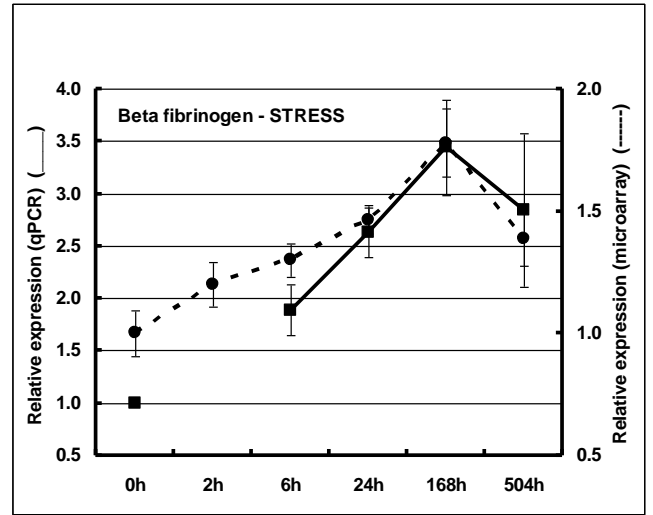
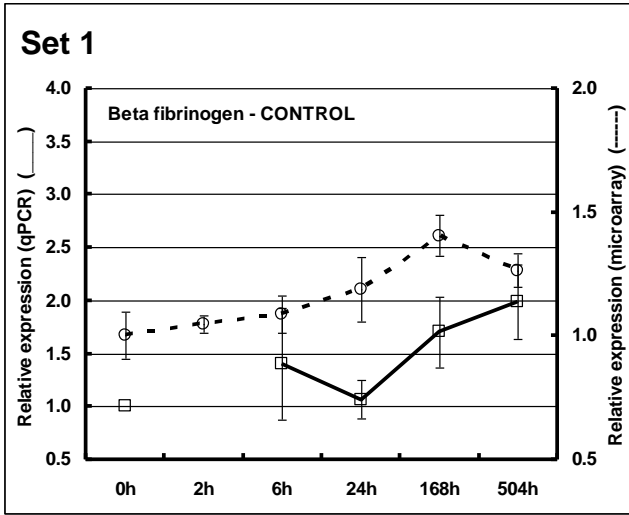


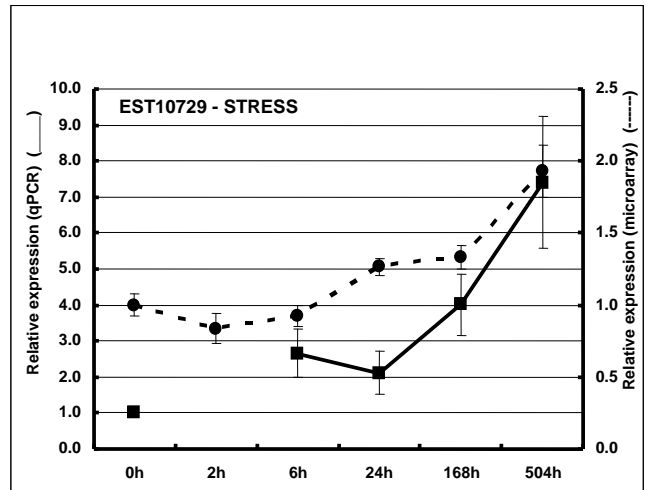
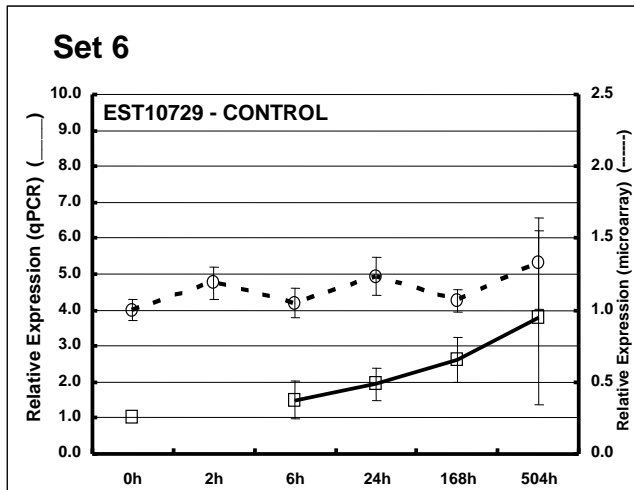
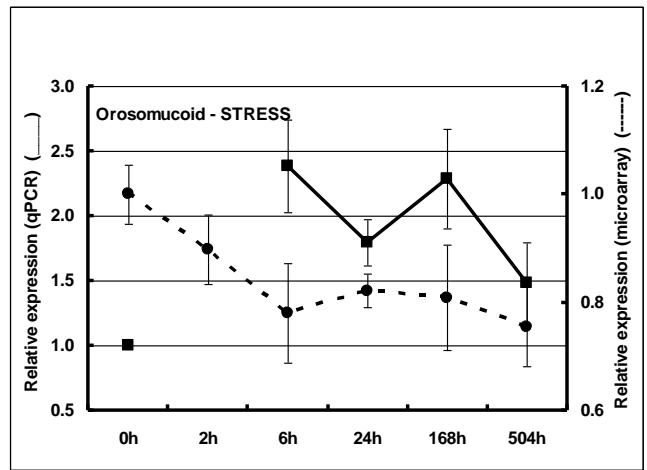
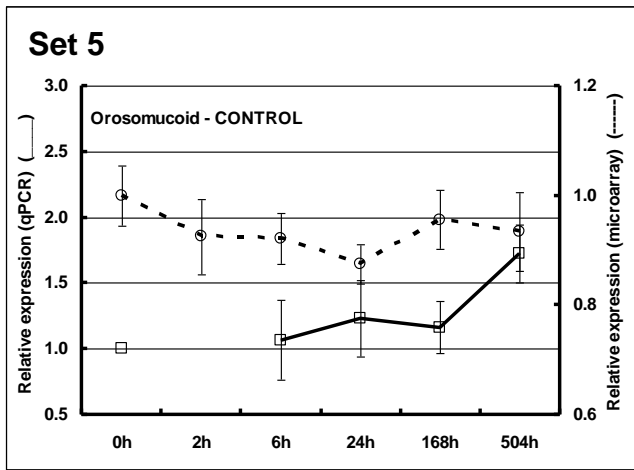
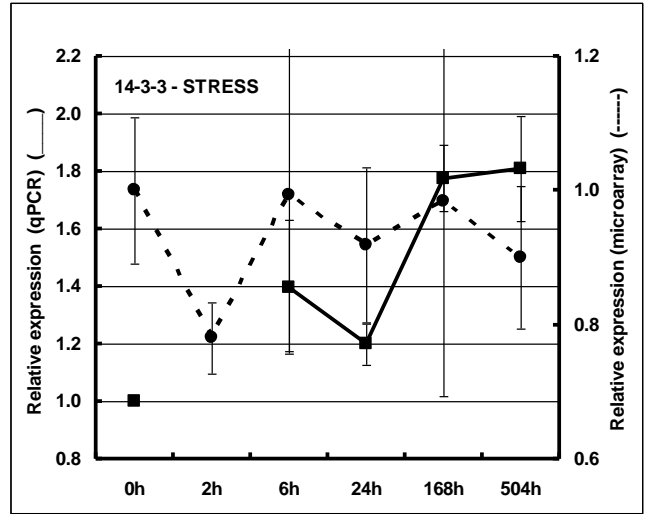
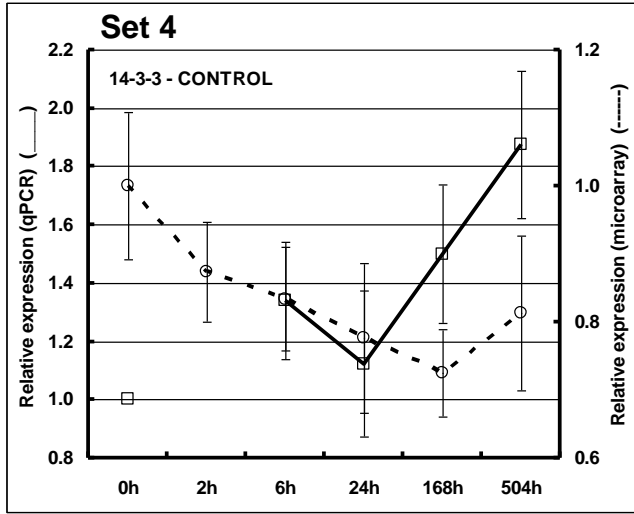
910

911

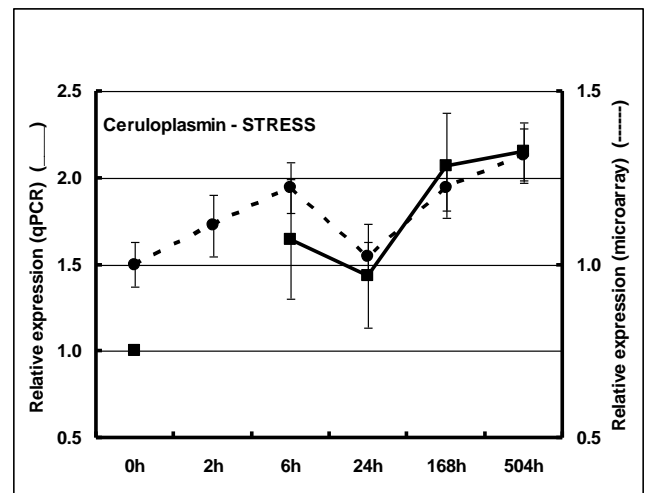
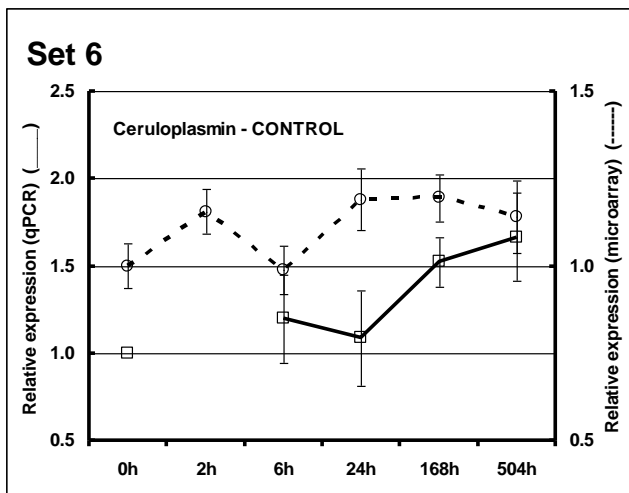
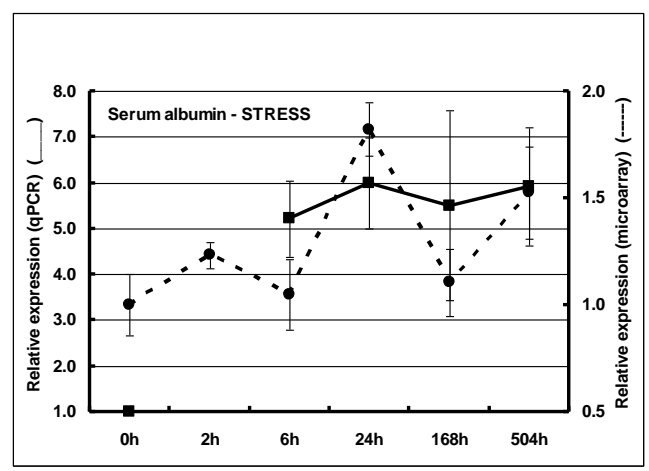
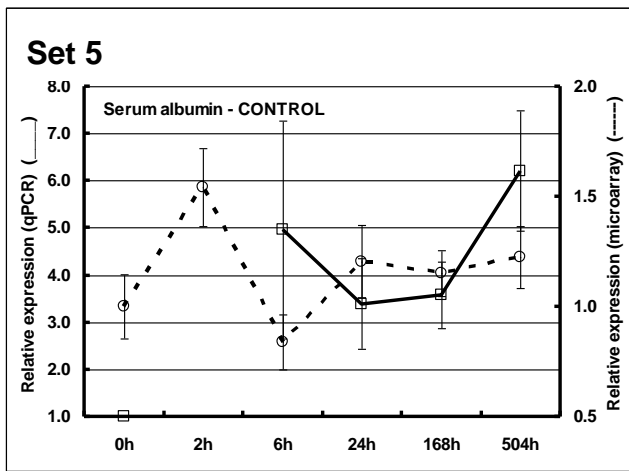
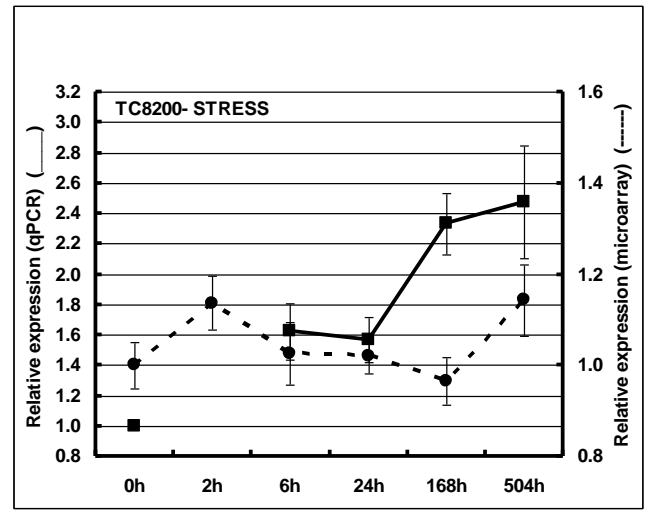
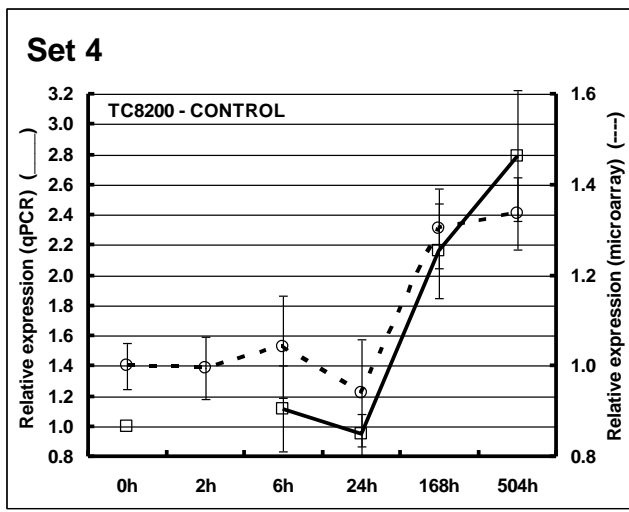
912
913







916
917



918 **Figure captions**

919

920 Figure 1. Levels of (a) plasma ACTH; (b) plasma cortisol; (c) plasma glucose; (d) plasma
921 lactate in confined (○) and unconfined (●) rainbow trout over a 648 h period. Each point
922 is the mean ± SEM of 12 fish. Significant differences between control and confined fish
923 are denoted by: * : $P < 0.05$; **: $P < 0.01$; ***: $P < 0.001$. The shaded areas represent the
924 two time periods from which samples were used to construct the SSH libraries.

925

926 Figure 2. Organisation of the Phase 1 microarray.

927 The Phase 1 array consisted of 21120 spotted cDNAs contributed to by three partners of
928 the “Stressgenes” project. Four stresses were represented and most of the clones were
929 derived from liver, brain and muscle SSH libraries. Numbers provide detail on the
930 number of clones spotted from each tissue/stress. The liver confinement libraries went
931 through a second step of redundancy subtraction.

932

933 Figure 3. Common expression patterns in response to a confinement stressor. RNA from
934 individual fish exposed to a confinement stressor (and unstressed controls) was
935 hybridised in dye-swap experiments to a multi-tissue cDNA microarray. Normalised
936 expression ratios (ln transformed) were analysed by ANOVA by time ($P < 0.05$ with
937 Benjamini and Hochberg False Discovery Rate multiple test correction) and clustered
938 into six k-means groups. The scale ranges from 4-fold up-regulated (red) to 4-fold down-
939 regulated i.e. 0.25 (green).

940

941 Figure 4. Individual expression patterns for some of the key members of the confinement
942 stressor k-means cluster groups. qPCR was carried out on 5 individuals (control and
943 stressed) for two gene members of each of Sets 1-6 (see Figure 3). All qPCR was carried
944 out in triplicate and fold change determined after normalisation to housekeeping genes β -
945 actin and 18S. Microarray data is averaged data for every instance of that gene on the
946 array and is displayed as fold change relative to $t = 0$. qPCR data (squares and solid line)
947 is compared directly to microarray data (circles and dashed line). Stress data is in filled
948 symbols and control data in empty symbols. Vertical axes are varied to best display the
949 correlation between the qPCR and microarray data. For primer sequences and template
950 accession numbers see Table 1.

951